



Funded by
the European Union



ESIRA – ENHANCING SOCIAL INNOVATION IN RURAL AREAS

Horizon Europe Grant agreement: 101136253

Authors: Marina Andelković, Milica Dolašević

EXPLOITATION PLAN AND IP STRATEGY II

Deliverable: D6.7

WP6 – Dissemination, Exploitation and Communication



Project details

ACRONYM	ESIRA
Title	ENHANCING SOCIAL INNOVATION IN RURAL AREAS
Grant Agreement Number	101136253
Call	HORIZON-CL6-2023-COMMUNITIES-01
Project Coordinator	UNIVERSIDAD DE BURGOS

Keywords	<ul style="list-style-type: none">- Exploitation strategy;- Exploitation routes;- Exploitation activities;- IP Strategy.
-----------------	---

Table of content

1. Summary	6
2. Introduction to the ESIRA project	7
3. ESIRA Project Exploitation Plan	8
3.1.1 Aims and Objectives	8
4. Key Exploitable result area 1.....	11
4.1 Research knowledge generated all WPs	11
4.1.1 Comparative studies on social exclusion in rural areas	12
4.1.2 Appraisal of existing policies, services, and initiatives to support social inclusion and social economy in rural areas	13
4.1.3 Formulation of policy recommendations.....	15
4.1.4 Enabling framework for the upscale of social economy in rural areas	16
4.1.5 Optimal pathways for MAPs' self-sustainability	17
4.1.6 MAPs operation: acting on innovation levers	18
4.1.7 Train-the-Trainers Programme	18
4.1.8 Building Strong Communities	19
4.1.9 Community of Practice	19
5. Key Exploitable Result area 2	21
5.1 Upscaling project MAPs as community-led innovation spaces	21
5.1.1 Regional MAP roadmaps.....	23
5.1.2 MAP governance and operation mechanisms.....	23
5.1.3 Regional and MAP Sustainability Plans.....	24
6. Key exploitable result area 3	25
6.1 Replicating community-led innovation spaces for social economy	25
6.1.1 Enabling framework for the upscale of social economy in rural areas	26
6.1.2 Map governance and operation mechanisms	26
6.1.3 Replicability Plan	27
7. Overview of exploitation potential	29
7.1 Exploitation potential: Marginalised groups/Drivers of social exclusion	29
7.1.1 MAP Burgos	29
7.1.2 MAP Abruzzo	32
7.1.3 MAP Trentino.....	33
7.1.4 MAP Northern Hungary and Northern Great Plain.....	36



7.1.5	MAP Zachodnopomorskie	41
7.1.6	MAP Leski-Bieszczadzki	43
7.1.7	MAP Jablanica and Pčinja	46
7.1.8	MAP Druskininkai.....	49
7.1.9	MAP Innlandet.....	51
7.2	Exploitation potential: Regional studies	52
7.2.1	MAP Burgos	52
7.2.2	MAP Abruzzo	54
7.2.3	MAP Trentino.....	55
7.2.4	MAP Northern Hungary and Northern Great Plain.....	56
7.2.5	MAP Zachodniopomorskie	57
7.2.6	MAP Leski-Bieszczadzki	58
7.2.7	MAP Jablanica and Pčinja	59
7.2.8	MAP Druskininkai.....	60
7.2.9	MAP Innlandet.....	61
7.3	Exploitation potential: Collected knowledge	62
7.3.1	MAP Burgos	62
7.3.2	MAP Abruzzo	67
7.3.3	MAP Trentino.....	71
7.3.4	MAP Northern Hungary and Northern Great Plain.....	77
7.3.5	MAP Zachodniopomorskie	78
7.3.6	MAP Leski-Bieszczadzki	87
7.3.7	MAP Jablanica and Pčinja	90
7.3.8	MAP Druskininkai.....	93
7.3.9	MAP Innlandet.....	96
8.	Management of intellectual property rights.....	99
8.1	Examples of the protection of Intellectual Property according to the type of result.....	101
8.2	Considerations when deciding not to protect results.....	101
8.3	Confidentiality agreement	102
9.	Partners.....	103

Partners

NO	Role	Short name	Legal name
1	COO	UBU	UNIVERSIDAD DE BURGOS
2	BEN	SODEBUR	SOCIEDAD PARA EL DESARROLLO DE LA PROVINCIA DE BURGOS
3	BEN	FO2	FUNDACION OXIGENO
4	BEN	HETFA	HETFA KUTATOINTEZET KFT
5	BEN	MRSZA	MAGYAR REFORMATUS SZERETETSZOLGALAT ALAPITVANY
6	BEN	IRI	INSTITUT ZA RAZVOJ I INOVACIJE – IRI
7	BEN	ERDN	EUROPEAN RURAL DEVELOPMENT NETWORK
8	BEN	LSMC	LIETUVOS SOCIALINIŲ MOKSLŲ CENTRAS
9	BEN	Druskininku VVG	DRUSKININKŲ VIETOS VEIKLOS GRUPE
10	BEN	EURICSE	EURICSE
11	BEN	BORGHIIIN	BORGHIIIN RETE DI IMPRESE
12	BEN	FTC	FEDERAZIONE TRENINA DELLA COOPERAZIONE SC
13	BEN	INN	HOGSKOLEN I INNLANDET
14	BEN	INNLANDCOUNTY	INNLANDET FYLKESKOMMUNE
15	BEN	EUROMONTANA	EUROMONTANA



List of acronyms

Acronym	Full name
COO	Coordinator
BEN	Beneficiary
EU	European Union
ESIRA	Enhancing Social Innovation in Rural Areas
WP	Work Package
MAP	Multi-Actor Platform
KER	Key Exploitable Result

List of Figures

Figure 1: Four phases of the project	10
Figure 2: ESIRA exploitation activities.....	21

1. Summary

The Exploitation Plan is a crucial component of the ESIRA project. The Exploitation Plan ensures that the project's outcomes are not only achieved but also effectively utilized and sustained over a long period of time. The Exploitation Plan serves to maximize the impact of the whole project, by clearly outlining how the project's results will be used, shared, and built upon. This is particularly important in rural areas where resources are often limited, and the successful implementation of social initiatives can significantly enhance the quality of life for residents.

This document represents the second version of the Exploitation Plan for the ESIRA project, covering the period from Month 7 to Month 18.

The plan is designed to create a replicable model that other communities can adopt. By detailing the processes and strategies that have proven effective, a blueprint for similar projects will be provided. This not only amplifies the reach of current efforts but also promotes broader systemic change.

The formation of an inclusive network of partners is another critical aspect. This network integrates communication and dissemination activities, ensuring that information flows smoothly and effectively between all stakeholders. An exploitation network is essential for fostering collaboration, sharing best practices, and coordinating efforts to address common challenges. It helps create a unified approach that enhances the overall effectiveness of economic initiatives.

The updated plan places increased emphasis on tailoring exploitation efforts to local contexts within rural areas and enhancing the replicability of successful models across diverse communities. It also strengthens the focus on empowering marginalized groups by fostering their active participation in the exploitation processes.

Moreover, The Exploitation Plan ensures the long-term sustainability and broader applicability of efforts. It provides a clear strategy for using and building upon project outcomes, fosters the creation of a cohesive and inclusive network of partners, and prioritizes the empowerment of marginalized groups. Through these efforts, the ESIRA project aims to create lasting positive change and set the stage for future projects to replicate and build upon practical successes.

2. Introduction to the ESIRA project

The ESIRA project aims to address the risk of poverty and social exclusion among marginalized groups in rural communities. This objective is pursued through a comprehensive work plan that focuses on several key areas:

- Researching community-led rural innovation spaces that can effectively connect and empower local actors, thereby enhancing social capital and fostering a sense of community. This research takes into account the considerable diversity found across rural areas within Europe.
- Nurturing and piloting social economy initiatives aimed at improving inclusiveness and living conditions for various vulnerable populations. These initiatives encompass enhancements in social service provision, economic diversification, and sustainable management of natural resources.
- Conducting a thorough assessment and formulating recommendations for policymakers to better support the third sector and local communities. This process aims to deepen understanding of the needs and challenges faced by vulnerable groups and the social economy.
- Facilitating knowledge exchange among local stakeholders to strengthen their capacities and facilitate the scaling up and replication of successful social economy initiatives throughout Rural Europe.

ESIRA seeks to create sustainable improvements in the socio-economic landscape of rural communities, promoting inclusivity and resilience among vulnerable populations.

3. ESIRA Project Exploitation Plan

This deliverable provides the second, updated version of the Exploitation Plan for the ESIRA project, covering the period from Month 7 to Month 18. It builds on the initial assessment of key exploitable results and further refines the consortium's strategies for creating impact and ensuring the project's legacy.

The Exploitation Plan will be regularly reviewed and updated as needed throughout the project to ensure dynamic and successful utilization of project results, protect intellectual property rights, and mitigate risks that could hinder exploitation.

Preparation for exploitation is an iterative process, co-developed with project partners and crucial stakeholders in the multi-actor platforms (MAPs), evolving as project results emerge. All project partners are involved in dissemination and exploitation efforts to raise awareness about the project and related topics, enhance rural collaboration and synergies, and share findings to create significant impacts.

The primary goal of the project's exploitation strategy is to ensure that the results achieve the anticipated impact both during and after the project's duration. This effort is supported by the dissemination and communication plan.

This document outlines the strategy and specific actions for exploiting results, along with details about particular outcomes and the expectations of partners regarding project deliverables.

The report consists of several sections. Following the introduction and description of the exploitation strategy, the report proceeds to present the preliminary key exploitable results identified and revised throughout the project's duration. Subsequently, a more detailed assessment of the exploitation routes is provided for each key result, reflecting progress and new opportunities.

Additionally, the exploitation potential of each MAP is revisited, detailing how partners intend to create, maintain, and strengthen spaces of innovative socio-economic solutions, and how these are translated into tangible impacts for both public and private value.

3.1.1 Aims and Objectives

ESIRA project includes a dedicated Communication, Dissemination, and Exploitation Work Package (Work Package 6), which focuses on effectively disseminating, exploiting, and promoting the uptake of project results. The Exploitation Plan, developed within WP6, aims to maximize the impacts generated by the project by facilitating the utilization of its outputs and findings.

The specific objectives of the Exploitation Plan:

- Outline expected procedures, plans, and strategies for exploitation.
- Summarize the beneficiaries' strategy and specific actions related to the protection and exploitation of project results.
- Present a clear vision of the intended impacts of the project and a well-planned strategy for protecting and exploiting results.

The aims of exploitation activities are to:

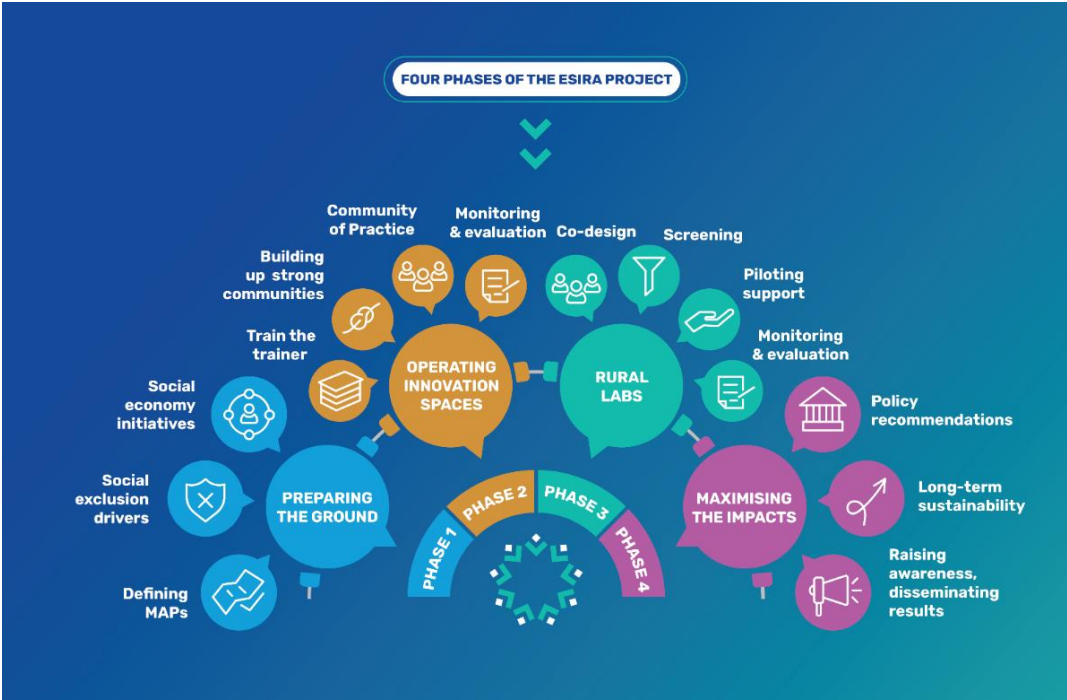
- Sustain project outcomes beyond the funding period to influence future strategic planning of value chain businesses and policies.
- Maximize the exploitation potential of project activities, findings, and outputs for economic, environmental, and social benefits.
- Support the utilization and benefits of outcomes during and beyond the project's lifetime.

Each beneficiary is required to take measures to ensure the exploitation of their results, either independently (e.g., for further research or for commercial or industrial use within their own activities) or by others (other beneficiaries or third parties, e.g., through licensing or transferring the ownership of results).

Beneficiaries must be proactive and implement specific measures to ensure the utilization of their results, to the extent feasible and justified. However, exploitation does not necessarily need to be carried out directly by the participants. They have the option to delegate this to another entity. Such indirect exploitation can be achieved through licensing the results or transferring them to third parties, as well as providing open access, by the requirements outlined in the grant agreement and the consortium agreement.

All project partners are actively engaged in dissemination and exploitation activities to enhance awareness and ensure the transfer of results for the highest possible impact.

Figure 1: Four phases of the project



4. Key Exploitable result area 1

4.1 Research knowledge generated all WPs

The main conclusions drawn from the partners' research on social exclusion and the social economy in rural areas will significantly enhance understanding of the specific needs of vulnerable groups in these regions. This comprehensive research will not only shed light on how the social economy currently assists these groups but also identify key areas where improvements are needed.

Through a comprehensive examination of the existing support structures and pinpointing gaps and inefficiencies, the research will provide a clear roadmap for better addressing the unique challenges faced by marginalized populations in rural communities. The insights gained will be particularly valuable for a wide range of stakeholders, including local governments, non-profit organizations, social enterprises, and community leaders.

ESIRA stakeholders will benefit in several crucial ways:

- **Better address the needs of vulnerable groups:** The findings will offer a clear understanding of the specific issues and barriers that vulnerable groups encounter. Deeper knowledge will enable stakeholders to develop more targeted and effective interventions, ensuring that the unique needs of these populations are met with appropriate support and resources.
- **More effectively implement social economy initiatives and community-led innovation ecosystems:** The research will serve as a guide for replicating and scaling effective social economy initiatives. It will also encourage the development of community-led innovation ecosystems that can foster sustainable economic growth and social inclusion, tailored to the distinct contexts of rural areas.
- **Design and deploy more efficient public and private mechanisms:** The research will identify specific areas where public and private mechanisms can be improved to better support vulnerable groups. This includes recommendations for policy changes, funding strategies, and collaborative efforts between various sectors. By implementing these suggestions, stakeholders can create more efficient and impactful systems that drive positive change and enhance the social and economic well-being of rural communities.

KEY EXPLOITABLE RESULT (KER)	LINKED TASK (T)	LINKED DELIVERABLE (D)
Regional studies on social exclusion and risk of poverty in rural areas	T4.1	D4.1
Regional status reports on social economy initiatives in rural areas	T4.2	D4.2
Enabling framework for the upscale of social economy in rural areas, improving the inclusion of vulnerable groups in various innovation ecosystems and social activities	T4.4	D4.4
Best practices for the sustainability of community-led innovation spaces	T3.3	D3.2
Policy recommendations report identifying main gaps and synergy potentials to better support vulnerable groups in rural areas through social economy initiatives	T4.3	D4.3
Training materials produced by the project for WP5 execution	T5.2	D5.2 and D5.3

4.1.1 Comparative studies on social exclusion in rural areas

Months	M1 – M12
Lead partner	HETFA
Participants	UBU, HEFTA, IRI, ERDN, LSMC, EURICSE, BORGHIN, INN, EUROMONTANA

The objective of this exploitation activity is to develop comparative studies that examine the situation of people living in rural areas in the selected countries and regions, highlighting the similarities and differences in the challenges they face. By M6, the first set of country reports will be delivered according to the common structure established by HETFA in M1. These reports will include the research questions, both common and

region-specific, and detail the methodology to be followed, including the framework for the literature review and the list of stakeholders to be interviewed.

Each report will address the specific circumstances of each country, with a focus on the regions where the case studies are conducted: Hungary (HETFA), Spain (UBU), Serbia (IRI), Norway (INN), Poland (ERDN), Lithuania (LCSS), and Italy (EURICSE). This will provide the foundation for a comparative analysis to be completed by M12 (D4.1, M12).

Partners will carry out this activity by using inputs **from literature reviews, expert interviews, and specific focus groups organized during the initial stages of the MAPs' setup**. This activity will provide a deeper understanding of the drivers of social exclusion, the challenges in addressing these disparities, and the needs of specific vulnerable groups in various rural areas of Europe, providing an initial contextual analysis for the project. Additionally, the reports will aid in the evaluation of policies and social services by presenting a clear picture of the current situation in which these policies and services can be compared.

Conducted activities: Between M7 and M18, partners prepared and finalised the national reports on social exclusion in rural areas, building on the common template developed and finalised in March 2024 following partner feedback. First drafts were submitted by the end of June 2024 and reviewed by HETFA and EURICSE. After revisions, the final versions were completed by September 2024. These reports formed the basis for the D4.1 Benchmark study on social exclusion in rural areas, which was compiled by HETFA and submitted in December 2024. This work provides a foundation for identifying shared and context-specific challenges across the participating regions and supports further exploitation of project findings related to social exclusion.

4.1.2 Appraisal of existing policies, services, and initiatives to support social inclusion and social economy in rural areas

Months	M1 – M12
Lead partner	EURICSE
Participants	UBU, HEFTA, IRI, ERDN, LSMC, EURICSE, BORGIIN, INN, EUROMONTANA

The objective of this exploitation activity is to benchmark and assess the effectiveness of existing public policies and initiatives by representative social economy organizations in promoting the social inclusion of vulnerable population groups.

Through desk research, expert interviews, and direct feedback from case studies, this activity will cover the following areas:

- The selected policy framework, ranging from local to regional, national, and European levels, addresses social inclusion in the context of rural development. This includes identifying gaps where social inclusion is not adequately addressed in rural-related policies.
- The public, private, or mixed tools and support mechanisms designed to empower community-led initiatives, such as direct support for social economy initiatives or the creation of spaces for social interaction and innovation.
- Specific social economy activities, such as enterprises and entrepreneurship, that provide essential social services or livelihoods under the Rural Pact, including agroecology, nature stewardship, and sustainable tourism.

The project partners will use the findings to conclude best practices, weaknesses, and areas for improvement to effectively address social exclusion in rural areas using a multi-dimensional approach. Key points for improvement from a local perspective will be integrated into WP5 to test the project's hypotheses on improving service delivery and the effectiveness of community-led social economy initiatives.

Conducted activities: Between M7 and M18, partners completed national reports assessing relevant policies, services, and social economy initiatives, based on a common template jointly developed by EURICSE and HETFA and finalised in March 2024. Drafts were submitted in June 2024, reviewed by EURICSE and HETFA, and finalised versions were published on the ESIRA website in March 2025. To support a shared understanding of key concepts, EURICSE organised a consortium-wide webinar on social economy and enterprise in November 2024. Partners also contributed country-specific insights and examples to the synthesis report D4.2 Multi-level analysis of social economy initiatives in rural areas, which was completed by EURICSE, reviewed by HETFA and UBU, and submitted in March 2025. The report provides comparative insights and informs future exploitation of policies and practices supporting social inclusion in rural areas.



4.1.3 Formulation of policy recommendations

Months	M12 – M48
Lead partner	EUROMONTANA
Participants	HETFFA, UBU, IRI, LSMC, ERDN, EURICSE

Utilizing the results of WP5 (T5.5) and the in-depth appraisal exercise of T4.1 and T4.2, the project partners will draw conclusions on the following:

- The main best practices and weaknesses of EU, national, regional, and municipal policies in addressing social disparities and marginalization in rural areas.
- The main policy gaps, opportunities for synergy, and strategies for reinforcing social policies in the context of rural development, ecological transition, and access to basic and adequate services, aligning with the EU Rural Pact.
- Specific legislative support frameworks for community-led social economy initiatives, social economy activities, and the provision of basic services.

To deliver these results (D4.3, M48), EUROMONTANA will coordinate the efforts through:

- Collecting feedback from partners and experts.
- Organizing knowledge-exchange policy workshops in M12, M23, and M35.
- Hosting a final policy feedback workshop (M46), inviting relevant actors including representatives from the European Commission, national governments, and allied projects and initiatives.

Conducted activities: The task began at M12 with EUROMONTANA leading the design and organisation of the first policy event, held in April 2024 (M16). This event included presentations of project results and a policy panel featuring representatives from DG EMPL and the Committee of the Regions, attracting 119 participants from 31 countries, including researchers, project managers, and stakeholders from other EU rural projects. Following this, between M16 and M18, EUROMONTANA prepared the concept for the next knowledge-exchange workshop scheduled for M23. The workshop aims to identify good practices on social economy initiatives promoting social inclusion in rural areas and to collect input for developing ESIRA’s policy recommendations. These ongoing activities will feed into the final policy outputs planned for later project phases.

4.1.4 Enabling framework for the upscale of social economy in rural areas

Months	M12 – M48
Lead partner	LCSS
Participants	UBU, HEFTA, IRI, ERDN, LSMC, EURICSE, BORGHIN, INN, EUROMONTANA

The main objective of this exploitation activity is to formulate specific recommendations for implementing community-led rural innovation spaces that facilitate knowledge exchange, co-design, and execution of social economy initiatives. Initiatives will be aligned with the EU Rural Pact, empowering rural residents, particularly vulnerable groups, to improve their livelihoods, reduce social exclusion, and generate socio-economic and environmental co-benefits while enhancing service delivery (D4.4, M48).

In close cooperation with WP3, which initially sets up a flexible MAP concept, this activity will use inputs from existing social innovation spaces, other collaborative networks, and direct feedback from dissemination and communication activities. The aim is to formulate recommendations on how to:

- Overcome barriers to maintaining and developing collaborative initiatives.
- Build new collaborative initiatives.

Recommendations will result from a participatory process, drawing on the experiences of project participants. They will be tailored to the specifics of rural regions and will include guidelines for the co-design and implementation of community-led innovation spaces. Guidelines will be important for creating a more inclusive and resilient local business ecosystem and will be illustrated with case studies across various community-led innovation topics relevant to post-industrial society. The topics will focus on unlocking the full potential of community-led innovation in rural regions through the following six strategies:

1. Agroecology;
2. Building platform-based collaborative networks;
3. Servitization of farming;
4. Smart specialization;
5. Green economy-oriented improvements of rural infrastructure;
6. Recruitment of unused local natural resources for social economy initiatives.



Each strategy is defined according to the theory of qualitative structures and includes groups of innovative activities that can maximize the impact of the social economy in a contemporary service-driven economic system. A set of strategies provides a “toolkit” of possible solutions and examples of business and social innovations that can inspire and serve as a learning platform for rural communities.

The guidelines will be introduced and tested during several focus group discussions and workshops (M12-M48). External feedback will be used to refine the recommendations. Enabling a framework for the upscale of the social economy in rural areas will motivate project partners to disseminate their experiences and support the capacity building of local communities.

Conducted activities: The task began at M12 with LCSS designing a work plan and preparing a template to document 5–6 social economy initiatives per MAP. Each initiative will be developed into a detailed case study to serve multiple purposes: sharing best practices internationally, encouraging similar initiatives, providing design and development guidelines, and informing regional policy recommendations. After M18, the template content will be tested on three selected cases in Lithuania and subsequently refined. This process will support the formulation of specific recommendations for implementing community-led rural innovation spaces that facilitate knowledge exchange, co-design, and execution of social economy initiatives. These recommendations will align with the EU Rural Pact and aim to empower rural residents, especially vulnerable groups, to improve livelihoods, reduce social exclusion, and generate socio-economic and environmental benefits, while enhancing service delivery.

4.1.5 Optimal pathways for MAPs’ self-sustainability

This exploitation activity includes organizing internal exploitation workshops to engage all partners in identifying exploitable results, mapping relevant knowledge users, and selecting the most promising routes for policy, scientific, and market exploitation of the results.

Euromontana, in collaboration with IRI, will organize a webinar to present the key exploitable results to rural stakeholders in the second half of the project. The webinar will provide an opportunity to discuss and gather feedback on the proposed exploitation routes, thereby enhancing the project's replication potential. Additionally, this task will develop a regional replicability plan to extend the project’s methodological approach to community-led rural innovation spaces. The replicability plan will apply both within regions where case studies serve as flagships and in new regions facing similar challenges (D6.4, M48).

4.1.6 MAPs operation: acting on innovation levers

Months	M6 – M42
Lead partner	UBU
Participants	UBU, SODEBUR, FO2, HÉTFA, MRSZA, IRI, ERDN, LSMC, Druskininku VVG, EURICSE, BORGHIIN, FCT, INN, INNLANDCOUNTY

Based on inputs from WP3 and the roadmaps and MAP definitions from T5.1, this activity will focus on operating the MAPs as community-led rural innovation spaces for social economy and inclusion. MAP's operation will involve leveraging innovation through capacity building, awareness, and stakeholder interconnections. The activities will vary according to the needs of each MAP and can be categorized as follows.

4.1.7 Train-the-Trainers Programme

The primary objective of this activity is to develop the capacities of MAP facilitators and regional organizations to drive social economy projects and build networks (municipalities, regional authorities, public bodies, local action groups, NGOs, entrepreneurs, etc.).

Train-the-Trainers program will enhance understanding of social inclusion for vulnerable groups in the project areas. Each pilot project will conduct a face-to-face training workshop as a kick-off for the MAP, followed by additional training sessions. The goal is to strengthen the knowledge and skills of local development leaders in areas such as social inclusion, green transition, community empowerment, demographic challenges, and sustainable entrepreneurship, ensuring the MAP's sustainability post-project. Online materials will be uploaded to the project website and other educational platforms (D5.2, M10). UBU will prepare the common materials, while each MAP manager (UBU, IRI, HETFA, ERDN, EURICSE, LSMC, INN) will tailor and deliver these materials to local stakeholders, creating additional resources as needed for specific local interests.

In M10, UBU developed D5.2 Training Modules covering the following topics: Social Innovation in Rural Areas, Green Transition in Rural Areas, Entrepreneurship and Innovative Economic Impulses in Rural Areas, Community Strengthening in Rural Areas, and Rural Depopulation and the Demographic Challenge. Additionally, in M17, the edition format of D5.2 Training Modules has been reviewed. In M22, the updated D5.3 Training Modules will be presented as the final version, which partners will translate into their respective languages to deliver to the MAP.



So far, five Train-the-Trainers workshops have been organised in MAPs. The aim of these sessions is to support each partner in transferring the acquired knowledge and methodology to their respective MAPs, ensuring a consistent and locally adapted approach to capacity building across all project regions.

4.1.8 Building Strong Communities

These activities aim to strengthen local and regional bonds, fostering a sense of community and social cohesion. They will facilitate synergies among MAP actors and raise awareness about the project and its core messages on social inclusion and social economy for rural development. MAP managers will co-organize dissemination activities within the case studies, including participation in local fairs and markets, organizing community events, and producing short videos.

These activities aim to strengthen local connections. They help raise awareness about the project and its messages on social inclusion and social economy in rural development. Each partner and MAP manager decides which capacity-building activities best fit their rural area. Some partners hold regular MAP meetings, even monthly, to keep the community engaged.

4.1.9 Community of Practice

To facilitate cross-regional knowledge exchange and peer-to-peer learning, MAP managers are required to establish a Community of Practice among the project's case studies, which will be open to new participants (e.g., other pilots from the second project funded under the same topic CL6-2023-COMMUNITIES-01-1). The project's website will host a virtual forum for continuous mutual learning, with different working groups led by project partners. Additionally, an annual CoP event will be organized, inviting MAP representatives. This CoP will enable networking and the formation of a network of companies focused on inclusive employment, social economy, local resources, renewable energies, circular economy, digitization, and agroecology. Best practices will be showcased and shared within this community.

The knowledge will be primarily exploited through:

1. Academic exploitation: New knowledge will launch new scientific careers in the research areas, with approximately 20 new academic careers expected.
2. Science-to-Policy exploitation: The connections and results will be translated into new policies and supporting frameworks, aligning with policy-led initiatives such as Smart Villages and LEADER/CLLD action groups.

3. Capacity building: The training materials and knowledge generated will enhance the skills of public and private workers, enabling them to better address social inclusion and the social economy in rural areas.
4. Additionally, partners will pursue the continuation of the R&D pathways initiated by this project, primarily through new public R&I funds and social/rural development initiatives.

In M14, the Community of Practice was established, and since then, one joint meeting has been organized with a sister project SERIGO. Furthermore, a virtual space for the exchange of knowledge, materials, and ideas has been established through both the project website and the LinkedIn group: ESIRA – Community of Practice. Five thematic virtual communities have been established: Inclusive Employment and Social Economy Community, Local Endogenous Resources and Agroecology Community, Renewable Energies Community, Circular Economy Community and Digitization Community.



5. Key Exploitable Result area 2

5.1 Upscaling project MAPs as community-led innovation spaces

Figure 2: ESIRA exploitation activities



Regional and local actors will significantly benefit from the development of enhanced community-led innovation ecosystems, designed to more effectively address local needs and opportunities. Ecosystems will foster collaboration and creativity at the grassroots level, enabling communities to devise and implement solutions that are tailored to their specific contexts.

Innovative ecosystems will also play an important role in empowering vulnerable groups throughout pilot areas. By actively involving these groups in decision-making processes, the innovative ecosystems will ensure that the voices of marginalized communities are heard, and their needs are met. This approach will not only promote social equity but also lead to more sustainable and resilient communities.

Community-led innovation ecosystems will:

- **Address local needs and opportunities:** By focusing on local challenges and leveraging local strengths, these ecosystems will create solutions that are relevant and effective. A localized approach will result in more impactful and enduring improvements in social and economic conditions.
- **Promote collaboration and shared ownership:** Bringing together diverse stakeholders, including local governments, non-profits, businesses, and community members, innovative ecosystems will foster a sense of shared ownership and responsibility. A collaborative effort will enhance the effectiveness of initiatives and ensure that they are supported by the entire community.
- **Empower vulnerable groups and individuals:** Involving marginalized populations in decision-making processes will enhance their capacity and confidence. This empowerment will allow these groups to advocate for their interests, contribute to community development, and actively shape their futures.
- **Enhance resilience and sustainability:** Through the development of localized solutions and the active involvement of all community members, innovative ecosystems will build resilience against social and economic challenges and promote sustainable practices that ensure long-term benefits for the community.

By M18, the ESIRA project has laid the groundwork for these innovation ecosystems through the initial work of the MAPs and engagement of local stakeholders. While the full benefits are yet to materialize, the process has already begun to activate local capacities and open channels for collaboration.

Regional and local stakeholders will gain immensely from enhanced community-led innovation ecosystems. This practice will not only address local needs and opportunities more effectively but also empower vulnerable groups to participate actively in decision-making processes and will lead to more inclusive, innovative, and resilient communities, capable of sustaining positive social and economic change.

Key Exploitable Result (KER)	Linked Task (T)	Linked Deliverable (D)
Regional MAP roadmaps	T5.1	D5.1
MAP governance and operation mechanisms	WP3 and WP5	/
Regional MAP sustainability plans	T3.3	D3.3

5.1.1 Regional MAP roadmaps

In parallel with defining the project's MAP methodology in T3.1, and in close collaboration with T4.1 and T4.2, this activity aims to define and set up the case study MAPs through the following steps:

- Describing the Rural Ecosystem: This activity involves a thorough and detailed examination of the various components that make up the rural ecosystem. It includes identifying and mapping out all key actors, understanding the nature and dynamics of their relationships, and analysing the governance structures in place. Additionally, it requires a deep dive into the economic activities that sustain the rural areas and an exploration of the social context, with a particular emphasis on the needs and challenges faced by vulnerable groups. Project partners will design and implement MAPs that are specifically tailored to the unique circumstances and requirements of each case study. A *detailed* approach ensures that the MAPs are relevant, effective, and capable of addressing the specific issues and opportunities within each rural community.
- Project partners will actively involve MAP members to ensure a high level of representativeness, with a particular focus on including vulnerable population groups and considering the gender dimension. Activities will involve reaching out to and engaging with a diverse range of stakeholders, ensuring that the voices and perspectives of those who are often marginalized are heard and integrated into the decision-making process.

By M18, the development of Regional MAP Roadmaps advanced through the collection and analysis of partner inputs on the status and composition of their MAPs. In M4, UBU prepared a template to gather this information, which partners completed by M6. Based on this input, UBU drafted D5.1 MAPs roadmaps: context, governance, operation and MAP's objectives, which included both a summary of MAP development and initial roadmaps for future activities. These roadmaps outline planned steps for each MAP in the coming phases. In M10, the Community of Practice was launched to support ongoing exchange among partners and contribute to the roadmap process.

5.1.2 MAP governance and operation mechanisms

Once the MAPs are constituted, the following activities will be conducted in each MAP in collaboration with local actors through an initial MAP kick-off meeting, surveys, and data analysis (D5.1/MS2 M6):

- Co-evaluation of local drivers of social exclusion, needs of population groups, opportunities and challenges of social economy initiatives, and other contextual factors.

- Co-definition of the MAPs' governance and operation as community-led innovation spaces, along with the objectives for nurturing social economy initiatives and the desired impacts, through specific roadmaps prepared for each MAP.

By M18, these activities have been initiated across the MAPs, with initial co-evaluation and co-definition efforts completed or ongoing in most pilot areas. Stakeholder feedback and local insights have been integrated into preliminary MAP roadmaps. In the upcoming period, these roadmaps will be refined and expanded based on lessons learned and will serve as the basis for strengthening the exploitation strategy, particularly in relation to community-led initiatives and replicability.

5.1.3 Regional and MAP Sustainability Plans

This exploitation activity focuses on developing comprehensive sustainability plans for each regional MAP to ensure the long-term impact and continuity of the project's initiatives. The Sustainability Plans will include strategies for maintaining and scaling the MAPs beyond the project's lifecycle, identifying funding sources, and fostering ongoing collaboration among stakeholders.

Key components of the sustainability plans will involve:

- Identifying sustainable funding: Exploring and securing diverse funding sources, including grants, private sector investments, and community fundraising, to support the ongoing activities and growth of the MAPs.
- Capacity building: Providing training and resources to MAP members to enhance their skills and capabilities, ensuring they are well-equipped to manage and sustain the initiatives independently.
- Fostering partnerships: Establishing and nurturing strong partnerships with local, regional, and national stakeholders, including public and private entities, to create a robust support network for the MAPs.

The regional MAP sustainability Plans will provide a solid foundation for the continued success and expansion of the MAPs, ensuring they can effectively address the needs of rural communities and support vulnerable groups well into the future.

6. Key exploitable result area 3

6.1 Replicating community-led innovation spaces for social economy

Key Exploitable Result (KER)	Linked Task (T)	Linked Deliverable (D)
Enabling framework for the upscale of social economy in rural areas, improving the inclusion of vulnerable groups in various innovation ecosystems and social activities	T4.4	D4.4
MAP governance and operation mechanisms	WP3 and WP5	/
ESIRA's replicability plan	/	D6.10

Replicating community-led innovation spaces strategy:

The project partners will consolidate their best efforts to make the project's MAPs sustainable spaces that continue operating after the project ends. To achieve this, the partners, in coordination with stakeholders will:

1. Design governance and sustainability mechanisms in close cooperation with local actors. Post-project, partners will continue participating as actors within these community-led innovation spaces, adhering to the established governance framework.
2. The financing model will be explored, considering various complementary options such as direct public support and extending services to regions and municipalities outside the project's MAPs.
3. Leveraging the project's results, consortium partners will endeavour to disseminate and replicate the project's MAPs concept in similar areas, whether within the same region or in comparable socio-economic contexts.

A Replicability plan will be formulated during the project (D6.10) for implementation post-project conclusion. Executing this plan is crucial for achieving the project's anticipated outcomes and impacts, thereby maximizing its overall effectiveness.

6.1.1 Enabling framework for the upscale of social economy in rural areas

This exploitation activity aims to create a robust framework that facilitates the expansion and enhancement of the social economy in rural areas. The primary focus is on improving the inclusion of vulnerable groups in various innovation ecosystems and social activities.

Key components include:

Developing support structures: Establishing and strengthening support structures, such as networks and partnerships, that provide resources, mentorship, and guidance to social enterprises and initiatives in rural areas

Policy advocacy and support: Working closely with policymakers to advocate for and develop supportive policies that foster the growth of the social economy. Activity includes potentially creating incentives for social enterprises, reducing regulatory barriers, and promoting inclusive practices.

Facilitating Access to Resources: Creating connections between rural social enterprises and potential investors, as well as providing platforms for these enterprises to showcase their work and attract support.

Promoting inclusivity in innovation ecosystems: Integrating vulnerable groups into innovation ecosystems by involving them in the design, development, and implementation of social and economic initiatives. Participatory approach ensures that the solutions developed are inclusive and address the specific needs and challenges faced by these groups.

Creating Replicable Models: Developing and documenting successful models and best practices that can be replicated in other rural areas. By sharing knowledge and experiences, the framework will enable other communities to adopt and adapt these models to their local contexts, fostering widespread growth and inclusion.

As of Month 18, preliminary groundwork for these exploitation actions has been laid through activities in the MAPs. Lessons learned and good practices are being identified and consolidated to collect the knowledge for the upcoming exploitation and replication phase.

6.1.2 Map governance and operation mechanisms

The governance and operation mechanisms of the Multi-Actor Platforms are designed to ensure effective collaboration, decision-making, and accountability among all stakeholders. The process begins with establishing a clear governance structure that includes representation from all key stakeholder groups, such as local governments, community organizations, social enterprises, and vulnerable populations. Regular meetings will be scheduled to facilitate transparent communication and collective

decision-making, with minutes and action points documented and shared with all members to maintain accountability and track progress.

Operationally, the MAPs implement a set of procedures and protocols to guide their activities and ensure efficient functioning. This includes defining roles and responsibilities for each member, setting up working groups or sub-committees focused on specific areas such as funding, capacity building, or community outreach, and establishing communication channels to keep all stakeholders informed and engaged. The MAPs can also utilize monitoring and evaluation tools to assess the impact of their initiatives, gather feedback from participants, and continuously improve their strategies.

To date, MAPs have already been activated. Feedback indicates that governance dynamics and operational efficiency across MAPs, depending on approach taken by individual MAP. Based on these insights, further improvements of operational mechanisms is planned for the next period, with an emphasis on knowledge sharing among MAPs, stronger links with WP5 community-building actions, and alignment with long-term exploitation goals.

MAPs are also being positioned as key instruments for maintaining and exploiting project results at the local level. Their role will be instrumental in implementing KIPs, supporting the adoption of ESIRA methodologies, and preparing the ground for future replication activities foreseen in the later stages of the project (M36–M48).

6.1.3 Replicability Plan

The replicability plan for Project ESIRA will focus on ensuring that its innovative approaches and successful outcomes can be effectively transferred and adapted to benefit other rural communities. Central to this plan is the comprehensive documentation of project methodologies, outcomes, and lessons learned, systematically captured and shared through reports, case studies, and best practice guidelines. This knowledge will serve as a valuable resource accessible to stakeholders interested in replicating similar initiatives.

As the project is currently at Month 18, this plan is in its preparatory phase. Initial steps will include identifying potential areas and actors for replication, based on the outcomes and experiences gathered during the first half of the project. The upcoming months will focus on mapping opportunities, assessing the transferability of key practices, and designing mechanisms that support effective replication once implementation begins from Month 36.

The plan will emphasize capacity building among local stakeholders to empower them with the skills and expertise necessary for replication. Training programs and workshops will be conducted to enhance the capabilities of community leaders, social entrepreneurs, and government officials in implementing and managing sustainable social economy

projects. This investment in human capital aims to foster local ownership and strengthen the foundation for sustainable development across diverse rural contexts.

ESIRA will foster partnerships and collaborations with regional and national entities to leverage resources and expertise for scaling up successful project models. Partnerships will facilitate the adaptation of interventions to different socio-economic and cultural settings, ensuring relevance and effectiveness in new environments. Advocating for supportive policies and monitoring the impact of replicated initiatives are additional strategies aimed at catalysing broader systemic change that promotes inclusive economic growth and social development in rural areas.



7. Overview of exploitation potential

7.1 Exploitation potential: Marginalised groups/Drivers of social exclusion

7.1.1 MAP Burgos

MAP: BURGOS (WITH CONDUCTED ACTIVITIES BY M18)			
Marginalised group	Main driver of social exclusion	Social inclusion strategy	Conducted activities to implement Social inclusion strategy by the M18
Rural women	The main driver of social exclusion for rural women is the lack of access to education and economic opportunities. Limited educational facilities, compounded by traditional gender roles, often restrict rural women's access to quality education. This results in fewer job opportunities, reinforcing economic dependency on their male counterparts. Additionally, inadequate healthcare, poor infrastructure, and limited political representation further marginalize rural women, preventing them from fully participating in societal and economic activities. These barriers create a cycle of exclusion, limiting their ability to	Social inclusion strategies to reduce the drivers of social exclusion faced by rural women should focus on improving education, economic opportunities, and community support. Expanding access to quality education through local schools and online learning platforms can empower women with knowledge and skills. Developing economic initiatives, such as microfinance programs and local cooperatives, can provide rural women with financial independence and job opportunities. Enhancing healthcare services and establishing support networks, including women's groups and	Efforts during the first months (M1-M6) focused on beginning to build community support, starting with the establishment of a MAP in the Pinares region that ensured equitable representation of women. The activities carried out included presentations of the project in several towns in the Pinares region. These were meetings open to the public in spaces provided by the town councils of the villages in which the project was explained and a space was provided for socializing and learning about the problems of the local population. In June 2024 (M6), the design of specific training actions aimed at

	improve their socio-economic status and perpetuating gender inequality in rural areas.	community centres, can address their health and social needs. Promoting gender equality through awareness campaigns and policy changes can further ensure that rural women have equal opportunities to participate in all aspects of community life.	promoting women's empowerment in local entrepreneurship was initiated.
Elder people	The main drivers of social exclusion for elderly people in rural areas include inadequate access to healthcare and social services, combined with transportation challenges. Many elderly individuals lack a driver's license and depend on infrequent and poorly coordinated rural transport services, limiting their access to essential services and social interactions. Poor infrastructure and limited transportation options further isolate them, while insufficient financial resources and lack of community support exacerbate their vulnerability. These factors collectively diminish their quality of life, preventing elderly individuals from fully participating in community life and accessing necessary care and support, thus increasing their social exclusion.	Social inclusion strategies to reduce exclusion among elderly rural people should focus on enhancing transportation, healthcare, and community engagement. Developing reliable and frequent rural transport services will improve access to essential services and social activities. Expanding telehealth services and mobile clinics can address healthcare shortages, ensuring that elderly individuals receive necessary medical care. Implementing social activities that involve elderly people, such as volunteer and intergenerational programs, can keep them active and engaged, fostering a sense of purpose and connection within the community.	The first needs of the MAP began to be detected in relation to the lack of access to health and care services for the elderly (based on questionnaires and the testimonies of MAP members). The Pinares MAP includes a wide range of initiatives related to health, care for dependent individuals, and accessible transportation. There is a commitment to carry out specific collaborative actions with public and private entities in the region to provide better services.

<p>Youth</p>	<p>Youth in rural areas face social exclusion due to limited employment opportunities, inadequate access to tertiary education and social services, and a significant digital divide.</p> <p>They often experience isolation due to a lack of social, cultural, and recreational activities, and inadequate public transportation further restricts their mobility. Traditional and conservative social norms can limit opportunities, particularly for marginalized groups, while the out-migration of young people in search of better prospects exacerbates the decline of community vitality</p>	<p>Social inclusion strategies to reduce social exclusion among rural youth should focus on enhancing education, employment opportunities, and community engagement.</p> <p>Improving access to quality education and vocational training can equip young people with essential skills. Creating local job opportunities through small business support and apprenticeships can provide meaningful employment options. Engaging youth in community projects, sports, and cultural activities fosters a sense of belonging and empowers them to contribute positively. Promoting digital connectivity and access to information can bridge rural-urban gaps, empowering youth with knowledge and opportunities.</p>	<p>Due to the aging population of MAP Pinares, in the first period of the project an effort was made to attract young people who wanted to get involved in developing initiatives to respond to the problems faced by young people in rural areas. The possibility of creating a Contest of innovative ideas for the youth of Pinares was also raised.</p>
<p>Migrants</p>	<p>Migrants in rural areas face social exclusion driven by economic instability due to limited job opportunities and low wages, language and cultural barriers, restricted access to healthcare and education, and legal challenges tied to immigration status.</p>	<p>Comprehensive policies and community support are essential to address the multifaceted challenges migrants face and promote social inclusion. Intercultural activities can create safe spaces for developing healthy relationships with others,</p>	<p>The migrant population is one of the most difficult to attract, some actions were carried out targeting the migrant population were interviews with social action centres and people who are part of the municipalities in the area to find out what representation of this group exists</p>

	These issues are compounded by a lack of social networks, discrimination, inadequate housing, and limited political participation, often resulting in social and physical isolation.	bridging cultural barriers and involving them more deeply in the community.	and what activities to promote in order to get closer to them.
--	--	---	--

The identified drivers of social exclusion and the social inclusion strategy for MAP Burgos will remain the same in the next period.

7.1.2 MAP Abruzzo

MAP: ABRUZZO (WITH CONDUCTED ACTIVITIES BY M18)			
Marginalised group	Main driver of social exclusion	Social inclusion strategy	Conducted activities to implement Social inclusion strategy by the M18
Elder people	Limited access to economic channels, mobility issues, and access to technology	Implementing accessible public transportation, offering digital literacy programs, and promoting intergenerational activities.	In the first period, potential ideas were collected with a focus on their possible benefits for elderly people: sustainable sharing mobility services, based on the needs of elderly people, without driving licence or car, that should reach services (especially in the health care); sharing services, starting from possible telemedicine services dedicated to elderly people; little mountain agricultural productions: valorisation of elderly people

			knowledge, transmission of this knowledge to the new generations.
Women	Gender discrimination, gender pay gap, limited access to leadership roles, and traditional gender roles in Italy	Providing gender equality training, promoting women's entrepreneurship, ensuring equal pay, increasing women's representation in leadership positions, and supporting work-life balance initiatives.	Within the framework of the potential initiatives, efforts were made to develop implications for women: sustainable sharing mobility services, many women in rural areas, especially among migrants, suffer a general lack of mobility services, which exclude them from many services; sharing services, connected to the item above; little mountain agricultural productions: in rural farms, often women have a not recognised role, even when their farm is named to them, thus it is essential to valorise women work and recognition.

The identified drivers of social exclusion and the social inclusion strategy for MAP Abruzzo will remain the same in the next period.

7.1.3 MAP Trentino

MAP: TRENINO (WITH CONDUCTED ACTIVITIES BY M18)

Marginalised group	Main driver of social exclusion	Social inclusion strategy	Conducted activities to implement Social inclusion strategy by the M18

<p>Young people in NEET situation</p>	<p>Economic factors, educational system, social and cultural factors, regional disparities, labour market conditions, institutional factors, psychological factors, migration and integration issues, social factors (including care responsibilities)</p>	<p>FTC comprehensive social inclusion strategy for young people in a NEET situation in the Trentino region, leveraging social prescribing, could include the following activities: multi-agency collaboration, case management (link worker), community engagement, access to technology, mentorship programs (link worker) and peer support groups, individual development plans (developed with a link worker) and targeted interventions, regular assessments and feedback mechanisms, community awareness campaigns and proactive outreach, involvement of young people in a NEET situation in the planning and implementation process to ensure their needs and perspectives are prioritized.</p>	<p>The activities focused on activating and coordinating the MAP in Vallagarina and Alta Valsugana, in collaboration with EURICSE and local third-sector and social service organizations. The strategy involved planning territorial pilots, mapping needs and opportunities for vulnerable groups, building on previous experiences such as the COPE project, co-designing initiatives like the “Young: WE-SPACE” proposal, organizing training and feedback events, and supporting Social Economy Districts. Dialogue was initiated with the Health and Social Councils to define a Collaboration Agreement focused on health, inclusion, and local development. The Health Council is proceeding with the signing, and the Strategic Cooperation Agreement with the Province of Trento, which includes expanding the Social Prescribing model, is scheduled for signature on 30 June 2025.</p>
<p>Young women in NEET situation</p>	<p>Economic factors, educational system, social and cultural factors, regional disparities, labour market conditions, institutional factors, psychological factors, migration and integration issues, social factors (including care responsibilities)</p>	<p>FTC comprehensive social inclusion strategy for young people in a NEET situation in the Trentino region, leveraging social prescribing, could include the following activities: multi-agency collaboration, case management (link worker), community engagement, access to technology, mentorship programs (link worker) and peer support groups, individual development plans (developed with a link worker) and targeted interventions, regular assessments and feedback mechanisms, community awareness campaigns and proactive outreach,</p>	<p>Activities focused on activating and coordinating the MAP in Vallagarina and Alta Valsugana, in collaboration with EURICSE and local third-sector and social service organizations. The work included planning territorial pilots, mapping needs and opportunities for vulnerable groups, building on previous projects such as COPE, co-designing initiatives like the “Young: WE-SPACE” proposal, and organizing training and feedback events on themes such as social farming and innovation in labour policies. Efforts also supported Social Economy Districts and promoted collaboration with Health and Social Councils to define a joint agreement</p>

		<p>involvement of young women in a NEET situation in the planning and implementation process to ensure their needs and perspectives are prioritized.</p>	<p>on health, inclusion, and rural development. The Health Council is proceeding with the signing of this agreement, while a Strategic Cooperation Agreement with the Province of Trento, including the extension of the Social Prescribing model to additional groups, is scheduled for signature on 30 June 2025.</p>
<p>People with disabilities</p>	<p>Structural barriers (inaccessible infrastructure and insufficient adaptations), economic factors, education and skills development, healthcare and social services, social attitudes and stigma, policy and legal frameworks, information and awareness, technological barriers</p>	<p>FTC social inclusion strategy for people with disabilities and chronic diseases, could include the following activities: more coordinated care networks, personalised care plans, assistive technologies that enhance independence and participation in daily activities, social prescribing programs and community centres (as hubs for social activities, support groups, trainings, fostering social connections and reducing isolation), accessible online platforms, regular assessment and data collection, stakeholder collaboration, pilot activities and programmes, involvement of people with disabilities and chronic diseases in the planning and implementation process to ensure their needs and perspectives are prioritized.</p>	<p>As part of the social inclusion strategy for people with disabilities, efforts were made to promote an inclusive approach within the MAP through continuous dialogue with the Provincial Health and Social Councils. Activities included involving the Council in the mapping and planning phases, collaborating with local social services to align with existing initiatives, and organizing training and awareness-raising on inclusion in public policy. Dialogue with the Health and Social Councils contributed to the development of a Collaboration Agreement on health promotion, inclusion, and rural development. The Health Council is proceeding with the signing of this agreement, while a Strategic Cooperation Agreement with the Province of Trento, which includes extending the Social Prescribing model to new beneficiary groups, is expected to be signed on 30 June 2025.</p>

The identified drivers of social exclusion and the social inclusion strategy for MAP Trentino will remain the same in the next period.

7.1.4 MAP Northern Hungary and Northern Great Plain

MAP: NORTHERN HUNGARY AND NORTHERN GREAT PLAIN (WITH CONDUCTED ACTIVITIES BY M18)

Marginalised group	Main driver of social exclusion	Social inclusion strategy	Conducted activities to implement Social inclusion strategy by the M18
Youth in NEET status	The region has a higher youth unemployment rate than the national average, the lowest number of new jobs in the country and significant out-migration of younger, higher skilled social classes. The young people who remain are low-skilled, often persistently inactive and tend to start families early. Students in segregated communities have lower motivation to learn, as they often come from social environments that place less value on school learning and performance. It follows that students' lagging behind is due to inadequate environments that they could overcome in a community that encourages school-related intellectual achievement.	Work in progress	

<p>Roma</p>	<p>A significant proportion of the Roma population is constrained by a range of negative factors, including low educational attainment, long-term unemployment and inactivity. These factors also result from the dismantling of public services in small villages, which are excluded from economic development due to their family circumstances (schools, health, administrative districts). The coexistence of unemployment and low incomes is a significant contributor to the prevalence of income poverty.</p>		
<p>Women</p>	<p>Women in the region tend to have lower educational attainment and lower unemployment rates. A significant proportion of young women are inactive due to childbearing. Teenage childbearing is more prevalent than the national average. The district, in common with other rural areas of Hungary and those experiencing poverty, exhibits a more traditional view of the family, with women occupying a more passive role as primary caregivers.</p>		

<p>Segregated communities</p>	<p>It is estimated that the number of families residing in severely underprivileged housing in segregated communities within the region exceeds 1,200. These families endure a more challenging daily existence than those experiencing relative poverty in the sub-region. Their children are at a significantly higher risk of mortality, and the services designed to assist them are constrained in their efficacy, despite the best efforts of those providing them.</p>		
-------------------------------	---	--	--

The MAP Northern Hungary and Northern Great Plain identified main drivers of social exclusion and a social inclusion strategy for the next period.

MAP: NORTHERN HUNGARY AND NORTHERN GREAT PLAIN

Marginalised group	Main driver of social exclusion	Social inclusion strategy
Youth in NEET status	<p>The region has a higher youth unemployment rate than the national average, the lowest number of new jobs in the country and significant out-migration of younger, higher skilled social classes. The young people who remain are low-skilled, often persistently inactive and tend to start families early. Students in segregated communities have lower motivation to learn, as they often come from social environments that place less value on school learning and performance. It follows that students' lagging behind is due to inadequate environments that they could overcome in a community that encourages school-related intellectual achievement.</p>	<p>MAP Bodrogköz is planning to organize a workshop to NEET youngsters about social entrepreneurship and opportunities in social economy.</p>
Roma	<p>A significant proportion of the Roma population is constrained by a range of negative factors, including low educational attainment, long-term unemployment and inactivity. These factors also result from the dismantling of public services in small villages, which are excluded from economic</p>	<p>MAP Bodrogköz is planning to support charity organizations' activities related to increasing the employment rate of Roma people by giving inputs about social economy and social entrepreneurship.</p>

	development due to their family circumstances (schools, health, administrative districts). The coexistence of unemployment and low incomes is a significant contributor to the prevalence of income poverty.	
Women	Women in the region tend to have lower educational attainment and lower unemployment rates. A significant proportion of young women are inactive due to childbearing. Teenage childbearing is more prevalent than the national average. The district, in common with other rural areas of Hungary and those experiencing poverty, exhibits a more traditional view of the family, with women occupying a more passive role as primary caregivers.	MAP Bodrogköz is planning to organize a workshop to women about entrepreneurship and opportunities in social economy.
Segregated communities	It is estimated that the number of families residing in severely underprivileged housing in segregated communities within the region exceeds 1,200. These families endure a more challenging daily existence than those experiencing relative poverty in the sub-region. Their children are at a significantly higher risk of mortality, and the services designed to assist them are constrained in their efficacy, despite the best efforts of those providing them.	

7.1.5 MAP Zachodniopomorskie

MAP: ZACHODNIOPOMORSKIE (WITH CONDUCTED ACTIVITIES BY M18)			
Marginalised group	Main driver of social exclusion	Social inclusion strategy	Conducted activities to implement Social inclusion strategy by the M18
Long-term unemployed	<p>One of the main factors influencing the status of the long-term unemployed is "learned helplessness" (the loss of the ability to assess the situation and inability to take action to improve one's situation). Long-term unemployment is the result of, among others, changes that took place during the transformation period in Poland, but also the lack of adequate preparation of employees for a possible change of place of employment. This is particularly visible in rural peripheral areas, significantly distant from city centers, where access to support facilities is difficult. Commuting to work outside the place of residence is also difficult (insufficient infrastructure - public transport).</p>	<p>In order to deal with the phenomenon of long-term unemployment, especially in rural areas, it is necessary to provide training enabling the acquisition of the ability to effectively communicate with a potential employer and training enabling the acquisition of new professional qualifications, preparation of appropriate training and courses preparing for work in accordance with market demand, institutional support in searching for a job or starting your own business. Actions are necessary to increase information and promotional activities among the unemployed about the labour market, its needs,</p>	<p>The social inclusion strategy has been implemented through a series of targeted activities, starting with the MAP Kick-off Meeting as the initial step. To better understand local needs and shape future initiatives, in-depth interviews were conducted with key stakeholders from local government, academia, civil society, and the private sector. This provided valuable insights into local challenges, especially in the areas of youth support and unemployment.</p>

		and the promotion of labour market services.	
Young people	The main factor of social exclusion of young people in rural areas is limited access to education, in particular further education (beyond compulsory education - primary school) allowing young people to acquire qualifications and good entry into the labour market. It is also the lack of appropriate social infrastructure where young people can develop their passions and become active.	Appropriate programs should be created and a place where young people can develop, spend their free time and become active should be provided. It is also important to cooperate with non-profit organizations that could initiate local activities, strengthening the building of civil society.	The implementation of the social inclusion strategy began with the MAP Kick-off Meeting and continued through a series of in-depth interviews aimed at understanding key social needs. Interviews were conducted with stakeholders from local government, academia, civil society, and the private sector, providing valuable insights into local challenges and opportunities. Particular attention was given to the needs of young people, highlighting the importance of creating spaces and programs for their development and engagement.

The identified drivers of social exclusion and the social inclusion strategy for MAP Zachodniopomorskie will remain the same in the next period.

7.1.6 MAP Leski-Bieszczadzki

MAP: LESKI-BIESZCZADZKI (WITH CONDUCTED ACTIVITIES BY M18)			
Marginalised group	Main driver of social exclusion	Social inclusion strategy	Conducted activities to implement Social inclusion strategy by the M18
Women	<p>One of the main factors is a woman's role as a mother and caretaker of the household fire and household members. More conservative attitudes and expectations about social roles can be observed in the MAP area. Women, by staying at home with children, taking care of the home, and caring for the elderly, become more socially and economically excluded.</p>	<p>Women will be included through grassroots initiatives, mainly women's initiatives. A great example is the activities of the Rural Housewives' Circles and, thanks to this, women's engagement in cultural, educational, and economic activities. The Rural Housewives' Circles can conduct business activities on simplified terms, providing opportunities for gainful employment. Another example is projects created by NGOs, including the activities of Local Action Groups.</p>	<p>Members of Rural Housewives's Circles are involved in MAP activities. They are also the authors of several initiatives submitted to Rural Lab, including the Rural Housewives' Circles Forum as a platform for exchanging experiences, supporting each other, sharing good practices, but also for showcasing and supporting entrepreneurship among women in rural areas.</p>
Migrants	<p>Migrants seem to be the first group that comes to mind if we think about exclusion in the study area. Why? The MAP area is the border between Poland and Ukraine, where a lot of migrants appeared after the war broke out. However, during the research, it turns out that according to MAP members,</p>	<p>The inclusion strategy aimed at migrants from Ukraine has a nationwide dimension. Each local government also does it individually - there are migrant service points, dedicated places, and people.</p>	<p>As previously reported, the issue of migrants in the MAP area is no longer relevant. Many people arrived here after the outbreak of the war in Ukraine, but the Bieszczady Mountains were only a stopover. Therefore, we are not focusing on this group within the MAP.</p>

	migrants do not spontaneously appear when listing excluded groups. Special people in each office have been assigned to deal with issues related to Ukrainians, so according to MAP members, this group is taken care of. Another issue is that many migrants are fleeing the area further afield, to big cities where there are better job prospects.		
Elder people	Older people are excluded in several fields: communicatively (inability to get to many places if one does not have one's own car, lack of well-connected local transportation), socially (due to long distances, it is more difficult for people to meet with others and more difficult to participate in cultural life). Digital exclusion is also emerging - both in terms of digital competence and access to the Internet.	NGO projects aimed at seniors, transportation of seniors to the venues (for example workshops), organization of cultural initiatives in village buildings and public spaces (more at the level of the village rather than the entire municipality), Universities of the Third Age, senior programs created by municipal offices.	People aged 65+ are also involved in MAP activities. For this reason, the locations of the meetings are rotated to facilitate participation from different groups.
People with disabilities	Disability is still a taboo subject - it is almost invisible in public spaces; little is said about it. Exclusions are the lack of adequate daycare places, but also 24-hour care, lack of appropriate activities, lack of infrastructure, and systemic lack of support. The biggest problem is with people who are entering adulthood - there are no prospects for them, no job opportunities, inclusion in various activities.	NGOs and social economy enterprises are taking on an inclusive role. There are attempts to create an Occupational Activity Facility, where people with disabilities can find employment.	People who are familiar with disability issues are MAP members.

<p>Youth</p>	<p>Young people do not have access to many activities that are typical in cities. At the age of 15, young people often leave their family homes for boarding schools, especially in the more mountainous areas, because the distance to high schools is long (up to 50-60km) and there is no daily commute.</p> <p>The exclusion of young people is in the form of exclusion from cultural life. There is also a lack of peers. These are some of the least densely populated areas of Poland and sometimes young people do not have peers in the immediate area, and due to the lack of public transportation, young people are also transport-excluded, so they have limited opportunity to participate in social life.</p>	<p>Cultural centers try to create an offer for young people, but there are only a few cultural centers and the distance to them is sometimes several tens of kilometres.</p> <p>NGOs, but also social economy enterprises (e.g. through volunteering) are trying to fill this gap and include young people in activities. The idea of a Youth Council of the municipality also emerged as an idea for including young people in political activities.</p>	<p>MAP is open to young people, although their participation remains limited. Efforts are made to understand their perspectives, whether through direct involvement or indirectly.</p>
--------------	---	---	--

The identified drivers of social exclusion and the social inclusion strategy for MAP Leski-Bieszczadzki will remain the same in the next period.

7.1.7 MAP Jablanica and Pčinja

MAP: JABLANICA AND PCINJA (WITH CONDUCTED ACTIVITIES BY M18)			
Marginalised group	Main driver of social exclusion	Social inclusion strategy	Conducted activities to implement Social inclusion strategy by the M18
Youth in NEET status	One of the primary drivers of the NEET (Not in Education, Employment, or Training) status among young people is a lack of access to quality education and training programs. In many regions, especially rural or underdeveloped areas, educational institutions are either insufficiently equipped or entirely absent.	To address the lack of access to quality education and training programs for young people, a crucial strategy involves the development and expansion of vocational training and retraining programs. By partnering with local businesses and industries, these programs can be tailored to meet current labour market demands, providing relevant and practical skills.	As part of MAP activities, a grant proposal titled "Economically Strong" was developed and approved, targeting young women under 30, especially those in NEET situations. The project focuses on providing practical skills through training and retraining programs tailored to current labour market needs, with the aim of improving their employability and economic independence.
Women	One of the main causes of social exclusion among young women is limited access to the labor market and rigid gender roles. In many communities, especially in rural or underdeveloped areas, young women face discrimination in employment and restricted opportunities for professional development. Traditional	A social inclusion strategy for young women should address barriers to education and employment while challenging traditional gender roles. Increasing employment opportunities can be achieved by connecting women's entrepreneurship, social entrepreneurship, and innovative	As part of MAP activities, the "Economically Strong" project was successfully developed and approved, focusing on empowering young women. The initiative offers tailored training and mentorship to enhance employability, support self-employment, and promote entrepreneurship. Through these activities, the project fosters leadership

	<p>gender roles often impose expectations that young women take primary responsibility for household and family care, preventing them from engaging in educational and professional activities. Additionally, the lack of support for balancing work and family obligations, such as childcare services and flexible working hours, further contributes to the social exclusion of young women from the labor market and educational programs. These factors together make it difficult for young women to acquire the relevant skills and qualifications needed for a successful career.</p>	<p>forms of economic cooperation that create job opportunities for women. Empowerment programs should build leadership and entrepreneurial skills and support women’s networks.</p>	<p>skills, strengthens economic independence, and contributes to breaking traditional gender roles.</p>
<p>Entrepreneurs</p>	<p>One of the primary drivers of social inclusion for entrepreneurs is access to supportive networks and resources. Entrepreneurs face challenges such as limited access to funding, mentorship, and markets, which can hinder their growth and development. Creating an ecosystem that fosters innovation and collaboration is essential. This includes providing access to business incubators, accelerators, and coworking spaces that offer mentorship, training, and networking opportunities. Additionally, policies that encourage entrepreneurship, such as</p>	<p>A social inclusion strategy for entrepreneurs should prioritize equitable access to resources, networks, and opportunities. This includes ensuring access to funding, technical assistance, and capacity-building support tailored to the needs of underrepresented groups. Establishing supportive networks of mentors, peers, and advisors is essential for guidance and collaboration. Capacity-building programs should offer training in key entrepreneurial skills while facilitating access to markets</p>	<p>A key initiative contributing to this strategy is the “Economically Strong” project, which delivers capacity-building programs specifically tailored to enhance entrepreneurial skills among young women. The project offers targeted training, mentoring, and access to vital information related to self-employment and business development. By connecting participants with networks of peers, mentors, and potential partners, the initiative fosters peer learning, cross-sector collaboration, and new market opportunities—helping to break down structural barriers to entry.</p>

	<p>tax incentives, grants, and simplified regulatory frameworks, can significantly boost entrepreneurial activity.</p>	<p>through market research and partnership opportunities. Advocating for policies that remove barriers to entry and promote diversity in entrepreneurship is crucial. Additionally, fostering a culture of innovation and collaboration through initiatives like innovation hubs and technology clusters can further support inclusive entrepreneurship.</p>	<p>In addition, MAP sessions addressed broader systemic challenges faced by entrepreneurs in rural areas. One session focused on regenerative agriculture, exploring innovative and sustainable models of agricultural entrepreneurship and identifying opportunities to replicate successful practices from other regions. Another session addressed seasonal employment optimization, analyzing the current state of seasonal work and proposing concrete measures to improve coordination and working conditions—highlighting areas with strong potential for entrepreneurial innovation.</p>
--	--	--	--

The identified drivers of social exclusion and the social inclusion strategy for MAP Jablanica and Pčinja will remain the same in the next period.

7.1.8 MAP Druskininkai

MAP: DRUSKININKAI (WITH CONDUCTED ACTIVITIES BY M18)			
Marginalised group	Main driver of social exclusion	Social inclusion strategy	Conducted activities to implement Social inclusion strategy by the M18
NEETS	Lack of education and job opportunities, social isolation	Implementing vocational training programs, providing career counselling, promoting apprenticeships, and fostering youth engagement in community activities.	MAP has facilitated inclusive group development, resulting in six pilot initiatives supporting vulnerable groups. The pilots are based on local insights and active involvement of target communities. Partnerships with local projects have been established, and Living Labs have been launched to enhance pilot support.
Elder people	Limited access to economic channels, mobility issues, and access to technology	Implementing accessible public transportation, offering digital literacy programs, promoting intergenerational activities, and ensuring access to healthcare services.	MAP meetings have been facilitated with a focus on strategic recruitment and inclusivity, leading to six pilot initiatives supporting low-income groups, the elderly, and youth. These pilots build on local knowledge, ESIRA research, and active involvement of target group members. Partnerships with local initiatives have been formed, and Living Labs have been launched to further support the pilots.

The MAP Druskininkai identified an additional marginalised group, as well as the key drivers of social exclusion and a social inclusion strategy for the next period.

MAP: DRUSKININKAI

Marginalised group	Main driver of social exclusion	Social inclusion strategy
NEETS, young people with fewer opportunities	Lack of education and job opportunities, social isolation.	Implementing vocational training programs, providing career counselling, promoting apprenticeships, and fostering youth engagement in community activities.
Elder people	Limited access to economic channels, mobility issues, and access to technology.	Implementing accessible public transportation, offering digital literacy programs, promoting intergenerational activities, and ensuring access to healthcare services.
People with insufficient income	Limited access to economic activities (especially - better paid), limited skills and abilities for economic activities, and access to technology.	Implementing vocational training programs, providing career counselling, promoting apprenticeships, and fostering engagement in community activities.

7.1.9 MAP Innlandet

MAP: INNLANDET (WITH CONDUCTED ACTIVITIES BY M18)			
Marginalised group	Main driver of social exclusion	Social inclusion strategy	Conducted activities to implement Social inclusion strategy by the M18
People with disabilities	<p>There are many factors that contribute to the social exclusion of people with disabilities. Attitudes and prejudices based in a lack of knowledge and understanding in the general public. Physical hinderances and the lack of universal design implementation, are still common. There is a lack of good meeting places, particularly for younger adults, that facilitate social connections and establishment of social ties between people with and without disabilities. Some disabilities can limit participation in the economy and resulting in lower household incomes, some disabilities also place additional economic burden on households making the economic situation a potential barrier to participation.</p>	<p>The foundation for the ESIRA project is a bottom up, locally embedded, approach to innovative projects aimed at increasing the social participation of people with disabilities. The MAP group will focus on creating projects that can counteract the main drivers or their effects. Being locally embedded and working in dialog with relevant local stake- and shareholders the MAP will develop pilots that address these drivers or that in other ways will increase the participation of people with disabilities in society.</p>	<p>MAP meetings have been conducted with a focus on recruitment and fostering a positive meeting culture, resulting in two pilot initiatives focused on including people with disabilities. These initiatives draw on ESIRA research, local expertise, and active involvement of target group members. The MAP operates inclusively to ensure equal participation. Connections with regional sister projects have been established, and Living Labs have been initiated to support the pilot initiatives beyond regular MAP activities.</p>

The identified drivers of social exclusion and the social inclusion strategy for MAP Innlandet will remain the same in the next period.

7.2 Exploitation potential: Regional studies

7.2.1 MAP Burgos

MAP: BURGOS (WITH CONDUCTED ACTIVITIES BY M18)			
Regional study	Main focus	Potential for exploitation	Conducted activity for exploitation of regional studies by the M18
Socio-economic characteristics of the Pinares Burgos-Soria region	The Pinares Burgos-Soria region in Spain is predominantly rural, characterized by extensive forests and agricultural areas. Its economy relies heavily on traditional sectors such as forestry and agriculture, which face challenges like seasonal fluctuations and limited infrastructure. The sparse population, spread across small towns and rural settlements, encounters difficulties in accessing essential public services, including healthcare and education. Furthermore, depopulation trends pose additional challenges, impacting	The Pinares Burgos-Soria region in Spain holds significant potential for sustainable development and natural resource utilization. With its extensive forests and agricultural lands, there is an opportunity for responsible exploitation of timber resources and agricultural production. The region's natural beauty also presents opportunities for eco-tourism and recreational activities, contributing to local economic growth.	An activity plan was designed to reinforce the needs of MAP people to carry out their initiatives in several areas: financial resources, visits to projects already underway, energy communities, ecosystem resource assessment and housing.

	community vitality and economic resilience.		
Demographic characteristics of the Pinares Burgos-Soria region	<p>The Pinares Burgos-Soria region in Spain is characterized by a low population density, with scattered settlements across its forested and agricultural landscapes. The population tends to be older on average, reflecting demographic trends of aging and depopulation common in many rural areas. Youth outmigration to urban centres for better economic opportunities is a notable demographic challenge. The region's population is also influenced by seasonal variations due to the agricultural and forestry sectors, which are primary sources of employment. Access to healthcare and educational facilities can be limited, impacting the overall well-being and development of the population.</p>	<p>The demographic characteristics of the Pinares Burgos-Soria region in Spain present both challenges and opportunities for sustainable development and resource utilization. With a low population density and an aging demographic, there is potential for innovative approaches to attract and retain residents, such as promoting eco-friendly industries and cultural tourism. However, depopulation trends and limited access to healthcare and educational facilities pose significant challenges. Efforts to balance economic growth with environmental conservation are crucial to harnessing the region's potential while preserving its natural and cultural heritage.</p>	<p>During this period, a questionnaire was designed to learn about the demographic characteristics of MAP members as well as their vision regarding the needs of the area and the ESIRA project. Data were collected in person from a small sample. A proposal of generate working groups among the people who promote initiatives in response to demographic and economic needs and also take advantage of the area's resources.</p>

The identified potentials for exploitation of regional studies for MAP Burgaos will remain the same in the next period.

7.2.2 MAP Abruzzo

MAP: ABRUZZO (WITH CONDUCTED ACTIVITIES BY M18)			
Regional study	Main focus	Potential for exploitation	Conducted activity for exploitation of regional studies by the M18
Analysis of social inclusion challenges for elder people and women in Abruzzo.	Addressing social exclusion of elder people and women through targeted initiatives such as accessible public transportation, digital literacy programs, gender equality training, and support for women's entrepreneurship.	Enhancing regional development through increased workforce participation, improved social cohesion, and economic empowerment of marginalised groups.	In the first part of the project, Borghi IN Rete focused on developing socio-economic initiatives aimed at supporting the elderly, women, farmers, youth, and the wider community. MAP members and Rural Labs have been engaged in identifying and refining the most effective initiatives across three key areas: mobility, proximity services, and rural agricultural products.

The identified potentials for exploitation of regional studies for MAP Abruzzo will remain the same in the next period.

7.2.3 MAP Trentino

MAP: TRENINO (WITH CONDUCTED ACTIVITIES BY M18)			
Regional study	Main focus	Potential for exploitation	Conducted activity for exploitation of regional studies by the M18
Young NEETs and the territory: a survey of under-30s in the autonomous provinces of Trento and Bolzano, EURICSE 2020	Study focuses on the NEET population in the autonomous provinces of Trento and Bolzano. It provides detailed insights into the local socio-economic context, characteristics of NEETs, and effective policies for addressing their needs.	By leveraging the findings and insights from the report, various stakeholders can develop informed, effective strategies to address the challenges faced by young people in a NEET situation in Trento and Bolzano, ultimately leading to better outcomes for this group of people and the community as a whole.	Stakeholder engagement included meetings with local actors such as health councils and communities to share findings and define next steps, as well as field visits and workshops to explore youth-related issues and inform future training. A project proposal titled "Young: WE-SPACE," focused on NEET youth, was presented to local stakeholders and potential funders. Collaboration with local social services and rural development groups supported the adaptation of initiatives to local needs and the integration of insights from previous work.

The identified potentials for exploitation of regional studies for MAP Trentino will remain the same in the next period.

7.2.4 MAP Northern Hungary and Northern Great Plain

MAP: NORTHERN HUNGARY AND NORTHERN GREAT PLAIN (WITH CONDUCTED ACTIVITIES BY M18)			
Regional study	Main focus	Potential for exploitation	Conducted activity for exploitation of regional studies by the M18
Socio-economic characteristics of the Cigánd District	Economic, social, institutional and historic drivers of inequalities and disadvantage in the region, and the potentials it has.	<p>Scientific and academic exploitation: journal articles and conferences, to make the issue known to as wide a section of the scientific community as possible.</p> <p>Local exploitation: the report will be free to access, and will present to local stakeholders; thus they can use it as well for program development, planning and application.</p>	

The identified potentials for exploitation of regional studies for MAP Northern Hungary and Northern Great Plain will remain the same in the next period.

7.2.5 MAP Zachodniopomorskie

MAP: ZACHODNIOPOMORSKIE (WITH CONDUCTED ACTIVITIES BY M18)			
Regional study	Main focus	Potential for exploitation	Conducted activity for exploitation of regional studies by the M18
Socio-economic characteristics of the Gryfice district	The low level of economic activity and the development of individual entrepreneurship in rural areas, mismatch of the educational offer to the needs of the labour market, ineffective career counselling classes, unattractive offer of organizing additional classes for young people, limited access to public services and transport accessibility contribute to above-average migration phenomena in the region in the region. towards larger urban centres.	To meet these challenges, social initiatives will focus on supporting social activation and the social economy, increasing access to public services, supporting education, including adapting the educational offer to the needs of the local labour market, supporting entrepreneurship, self-employment and the creation of new jobs and mobility employees.	A regional report for the MAP area was prepared with the involvement of MAP members, providing a deeper understanding of the socio-economic context and social exclusion in the Gryfice commune and the West Pomeranian Voivodeship. The report's findings were presented to MAP members during a meeting. Based on data from regional studies, ideas for social economy initiatives were developed collaboratively with MAP members.

The identified potentials for exploitation of regional studies for MAP Zachodniopomorskie will remain the same in the next period.

7.2.6 MAP Leski-Bieszczadzki

MAP: LESKI-BIESZCZADZKI (WITH CONDUCTED ACTIVITIES BY M18)			
Regional study	Main focus	Potential for exploitation	Conducted activity for exploitation of regional studies by the M18
Socio-economic characteristics of the MAP Leski-Bieszczadzki	Focusing on the exclusionary factors of marginalized groups and considering what to do to be able to integrate these groups into socioeconomic life. Key in this area is digital exclusion, social exclusion, exclusion from cultural life, communication exclusion, and inability to engage in income-earning work.	Providing support to NGOs, municipalities and other entities that seek to prevent exclusion is key. There is a lack of financial, mentoring, infrastructural support, among others. National programs are insufficient. There is a need to involve municipal offices and other actors to strengthen local communities and to work on creating programs and policies that are adapted to the real problems.	<p>A regional report was prepared for the MAP area, with contributions from MAP members. This gave us a deeper and better understanding of the socio-economic context and social exclusion in the Lesko and Bieszczady counties.</p> <p>The results of the report were presented to MAP members at a meeting and through other communication channels (email, Messenger). Based on data obtained from regional studies, ideas for social economy initiatives were developed together with MAP members.</p>

The identified potentials for exploitation of regional studies for MAP Leski-Bieszczadzki will remain the same in the next period.

7.2.7 MAP Jablanica and Pčinja

MAP: JABLANICA AND PČINJA (WITH CONDUCTED ACTIVITIES BY M18)			
Regional study	Main focus	Potential for exploitation	Conducted activity for exploitation of regional studies by the M18
Socio-economic characteristics of the Jablanica and Pčinja District	Economic inequality and insufficient employment opportunities, lack of infrastructure and limited access to healthcare, education, and other essential resources significantly impact the local population, particularly young people, leading to migration from rural areas.	To address these challenges, social initiatives will focus on economic and cultural diversification, investment in rural infrastructure, and support for local entrepreneurs, farmers, youth, and women. Preserving traditional knowledge and cultural identities is also crucial. Empowering local communities and facilitating their active participation in decision-making processes will be essential to ensure that their specific needs and interests are considered.	By M18, the focus was on developing socio-economic initiatives that support entrepreneurs, farmers, youth, and women. Together with MAP members, IRI mapped the best ways to assist these groups and created an action plan centered around three priority themes: supporting youth and women entrepreneurship and prequalification; regenerative agriculture – raising awareness and building capacities of farmers; and optimization of seasonal employment in rural areas.

The identified potentials for exploitation of regional studies for MAP Jablanica and Pčinja will remain the same in the next period.

7.2.8 MAP Druskininkai

MAP: DRUSKININKAI (WITH CONDUCTED ACTIVITIES BY M18)			
Regional study	Main focus	Potential for exploitation	Conducted activity for exploitation of regional studies by the M18
Druskininkai region, Lithuania	Addressing social exclusion of NEETs and elder people through targeted vocational training, career counselling, digital literacy programs, and promoting intergenerational activities.	Enhancing local economy through improved workforce participation, fostering innovation and entrepreneurship, and increasing community engagement.	<p>The regional study of the Druskininkai area has been used to guide and inform project activities, especially within the MAP group and during the development of pilot initiatives. This contextual understanding has played a key role in shaping the project's direction and ensuring local relevance.</p> <p>Additionally, a regional review was prepared and submitted, highlighting the emerging nature of the social economy and social enterprise concept in Druskininkai and Lithuania as a whole. The review focuses on the integration of social enterprises within Lithuania's comprehensive welfare system, providing new insights into this developing field.</p>

The identified potentials for exploitation of regional studies for MAP Druskininkai will remain the same in the next period.

7.2.9 MAP Innlandet

MAP: INNLANDET (WITH CONDUCTED ACTIVITIES BY M18)			
Regional study	Main focus	Potential for exploitation	Conducted activity for exploitation of regional studies by the M18
Kongsvinger-region Inland Norway	The Kongsvinger region has faced challenges when it comes to several social indicators and while there are differences between its 6 municipalities lower economic status and higher risk of poverty, lower educational attainment, and social exclusion. The study will particularly focus on the social inclusion of persons with disabilities in Kongsvinger region in the east of Inland Norway.	The local innovation group will consist of participants from civil society, business, politics, and academia in the region. This group will during the project develop and implement five measures that will improve the inclusion of persons with disabilities, and the goal is that these will contribute to long-term changes in the region. Recent success of other programs, for instance a program aimed to better include NEETs and a significant increase in high school graduation rates shows that Kongsvinger is a region experiencing some positive changes based on local mobilisation of local resources. Hopefully we can keep this momentum going and learn how to exploit synergies. As many other regions in Norway and the EU are facing similar challenges to the Kongsvinger region, the knowledge and experiences	The regional study of the Kongsvinger region has been used to inform project activities, particularly within the MAP group and during the development of pilot initiatives. A paper has also been prepared for review, focusing on the emerging concept of social economy and social enterprises in Kongsvinger and Norway, with particular attention to their integration within a comprehensive and strong welfare system.

		generated by this project will be relevant both locally and at other scales and potentially generalisable to different contexts.	
--	--	--	--

The identified potentials for exploitation of regional studies for MAP Innlandet will remain the same in the next period.

7.3 Exploitation potential: Collected knowledge

7.3.1 MAP Burgos

MAP: BURGOS (WITH CONDUCTED ACTIVITIES BY M18)				
Key area of interests	Motivation/ Governance	Exploitation routes	Potential for replication	Conducted activities by the M18
Research knowledge generated in rural areas	The collected knowledge will facilitate practical fieldwork by providing direct support and resources to enhance local communities. This will enable tangible assistance to marginalized groups in the Pinares Burgos-Soria region, improving their	The regional studies on social exclusion in the Pinares Burgos-Soria region have served as a scientific tool for obtaining specific knowledge about vulnerable groups in this region. These studies provide valuable insights and both comprehensive and reliable knowledge that can inform	By understanding the unique dynamics in the Pinares Burgos-Soria region, stakeholders can create and replicate more effective strategies to promote inclusion and empower vulnerable groups. Utilizing these study findings, initiatives can be customized to meet the specific needs of rural	The UBU team designed a template to share with MAP for the proposal of social innovation initiatives in the area. It was circulated to MAP members and other stakeholders in the area and during the months M6 M18 a total of 33 proposals have been received.

	<p>economic opportunities and social inclusion outcomes.</p>	<p>targeted interventions and policies.</p>	<p>populations, encouraging greater participation in innovation ecosystems and social activities. This comprehensive approach enhances the well-being and opportunities for individuals in rural areas, contributing to more inclusive and resilient communities overall.</p>	
<p>Framework for the upscale of social economy in rural areas</p>	<p>Motivated by the region's rich natural environment and cultural heritage, the framework for scaling up the social economy in the Pinares Burgos-Soria seeks to empower local communities through cooperative ventures, social enterprises, and sustainable initiatives. By promoting policies that support these efforts, enhancing local capacity through training programs, and improving infrastructure and market access, the framework aims to stimulate economic growth and create resilient communities. It aims to</p>	<p>To advance the social economy of Pinares Burgos-Soria, potential exploitation routes include fostering cooperative ventures in agriculture, forestry, and tourism. Encouraging the growth of social enterprises dedicated to conservation and community development is another avenue. Developing sustainable tourism initiatives to highlight the region's natural and cultural assets, investing in renewable energy projects, improving digital infrastructure, and enhancing transportation networks are essential routes. Additionally, providing educational and training programs and forming</p>	<p>Cooperative ventures in agriculture, forestry, and tourism can be replicated where natural resources are abundant but underutilized. Social enterprises focused on conservation and community development can thrive in areas committed to environmental sustainability and local empowerment. Sustainable tourism initiatives can be replicated in regions with unique cultural and natural heritage, attracting visitors while preserving local traditions. Forming partnerships leverages collective resources to address common challenges and promote sustainable development practices globally.</p>	<p>Structural barriers such as lack of financing or isolation from the market were detected, for which collaboration with ethical banking, crowdfunding platforms and public bodies is encouraged, facilitating access to economic resources for innovative initiatives. One of MAP's needs was the lack of resources for financing the social economy. Therefore, a training day was designed to help boost projects in this area. Business models with social and environmental impact were especially encouraged.</p>

	foster partnerships across sectors, raising awareness about the benefits of social economy initiatives in promoting inclusive development and preserving the region's unique identity for future generations.	partnerships across sectors are key to fostering economic growth and preserving the region's identity.		
MAP governance and operation mechanisms	To establish a functional MAP to address social challenges, it must integrate democratic mechanisms and practices that will empower the community to create new opportunities based on innovative solutions.	The Pinares Burgos-Soria MAP will operate by bringing together diverse stakeholders – such as local residents, government representatives, non-profits, businesses, and academic institutions – to collaboratively address rural issues. Through regular, inclusive meetings and transparent decision-making processes, the platform will identify community needs, prioritize initiatives, and allocate resources effectively. By leveraging the unique strengths and perspectives of each participant, the platform will foster innovative solutions, enhance local capacity, and ensure that all voices are heard and considered, ultimately promoting sustainable	By establishing democratic and stable ways to work in multifactorial platforms, such as the Pinares Burgos-Soria MAP, it may become a reliable and replicable model to support future platforms and provide direct democratic patterns to navigate future social initiatives.	Several regular meetings since the beginning of the project were held with the MAP for members to work together to find collaborative solutions to community problems.

		<p>development and social cohesion in rural areas.</p>		
<p>Best practices for the community-led innovation spaces</p>	<p>The motivation to create best practices for community-led innovation spaces in the Pinares Burgos-Soria area stems from a desire to foster local creativity, collaboration, and sustainable development. These spaces aim to empower community members to address local challenges and opportunities through innovative solutions, stimulate economic growth, enhance social cohesion, and preserve the region's natural and cultural heritage. Ultimately, establishing best practices for these innovation spaces seeks to create a resilient and thriving community</p>	<p>To address best practices, it is important to document successful initiatives in a comprehensive way, including challenges and outcomes, then establishing accessible knowledge-sharing mechanisms. Through tailored training programs and peer learning networks, stakeholders can disseminate these practices effectively, listening carefully to the community. Developing replication toolkits facilitates easy implementation, while pilot projects test the viability of initiatives in diverse rural contexts, with rigorous monitoring and evaluation guiding adjustments.</p>	<p>Best practices serve as useful drivers for successful future actions based on innovative social initiatives such as MAPs. Establishing comprehensive knowledge about best practices may be the most powerful way to replicate these actions.</p>	<p>The Pinares MAP plays a fundamental role in identifying territorial priorities and co-defining thematic areas of action, which are channelled through the Rural Lab working groups. These co-creation spaces focus on five major themes: Health, Well-being and Community; Culture, Education, Leisure and Heritage; Environment, Nature and Digitalization; Entrepreneurship and Economy; and Tourism, Hospitality and Services. Each group functions as a collaborative forum where local knowledge, creativity, and shared responsibility converge to address the region's needs.</p>

	equipped to tackle future challenges proactively.			
Regional MAP sustainability	In order to be consistent with the values that drive the Pinares Burgos-Soria MAP, it is necessary to address the ecological impact resulting from the management and organizational activities that will support this project.	Apart from the responsible use of vehicles to move people among the vast area of Pinares Burgos-Soria territory, the MAP can collaboratively develop and implement eco-friendly practices and policies. Through shared decision-making, the platform can promote sustainable land use, conservation of natural resources and biodiversity protection. It may facilitate the exchange of knowledge and best practices, support sustainable agriculture and renewable energy projects, and ensure that environmental considerations are integrated into all development plans.	In order to replicate sustainable actions in further MAPs, stakeholders should first document successful practices and establish a knowledge-sharing system accessible to all. They should then develop training programs tailored to different rural contexts, foster peer learning networks, and create replication toolkits for easy implementation. Pilot projects can test these actions in diverse locations, with robust monitoring and evaluation mechanisms in place to track progress and inform adjustments. Collaboration across sectors is essential to maximize resources and scale up the impact of sustainable actions across rural areas.	From the project's first year, contact was established with other sister projects, and an open Community of Practice was created in M10 by UBU. This community facilitates the replication effect by disseminating good practices and experiences gained during the project.

The identified exploitation activities, motivation, exploitation routes and potential for replication for MAP Burgos will remain the same in the next period.

7.3.2 MAP Abruzzo

MAP: ABRUZZO (WITH CONDUCTED ACTIVITIES BY M18)				
Key area of interests	Motivation/ Governance	Exploitation routes	Potential for replication	Conducted activities by the M18
Research knowledge generated in rural areas	The collected knowledge will facilitate practical fieldwork by providing direct support and resources to enhance local communities. This will enable tangible assistance to marginalized groups in the Abruzzo region, improving their economic opportunities and social inclusion outcomes.	The regional studies on social exclusion in the Abruzzo region have served as a scientific tool for obtaining specific knowledge about vulnerable groups in this region. These studies provide valuable insights and both comprehensive and reliable knowledge that can inform targeted interventions and policies.	By understanding the unique dynamics in the Abruzzo region, stakeholders can create and replicate more effective strategies to promote inclusion and empower vulnerable groups. Utilizing these study findings, initiatives can be customized to meet the specific needs of rural populations, encouraging greater participation in innovation ecosystems and social activities. This comprehensive approach enhances the well-being and opportunities for individuals in rural areas, contributing to more	The Country Report edited by EURICSE aimed to offer a comparative analysis of social exclusion phenomena in rural areas and to evaluate policies, services and initiatives to support the social economy and inclusion. The report offers an in-depth look at the Italian territorial context, focusing on socio-economic inequalities and exclusion processes in less urbanized areas, while simultaneously analyzing the public and social responses already in place.

			inclusive and resilient communities overall.	
Framework for the upscale of social economy in rural areas	<p>Motivated by the region's rich natural environment, the framework for scaling up the social economy in the Abruzzo region seeks to empower local communities through community-based cooperative. By promoting policies that support these efforts, enhancing local capacity through training programs, and improving infrastructure and market access, the framework aims to stimulate economic growth and create resilient communities. It aims to foster partnerships across sectors, raising awareness about the benefits of social economy initiatives in promoting inclusive development and preserving the region's unique identity for future generations.</p>	<p>To advance the social economy of Abruzzo, potential exploitation routes include enhancing the activities of community-based cooperatives in agriculture, mobility, culture and welfare.</p>	<p>The model of community-based cooperative could be replicated in other municipalities, but also other cities/countries</p>	<p>The community cooperative model began to gain visibility thanks to the MAP and then Rural Lab meetings, during which synergies with other initiatives and projects carried out by the network were sought. In this way, the model continues to be imitated and new cooperatives have been created and are joining the network.</p>

<p>MAP governance and operation mechanisms</p>	<p>To establish a functional MAP to address social challenges, it must integrate democratic mechanisms and practices that will empower the community to create new opportunities based on innovative solutions.</p>	<p>The Abruzzo MAP will operate by bringing together diverse stakeholders – such as local residents, government representatives, non-profits, businesses, and academic institutions – to collaboratively address rural issues. Through regular, inclusive meetings and transparent decision-making processes, the platform will identify community needs, prioritize initiatives, and allocate resources effectively. By leveraging the unique strengths and perspectives of each participant, the platform will foster innovative solutions, enhance local capacity, and ensure that all voices are heard and considered, ultimately promoting sustainable development and social cohesion in rural areas.</p>	<p>By establishing democratic and stable ways to work in multifactorial platforms, such as the Abruzzo MAP, it may become a reliable and replicable model to support future platforms and provide direct democratic patterns to navigate future social initiatives.</p>	<p>Periodic meetings are very useful to allow all MAP members to collaborate actively and proactively. The fact that our network is now consolidated, makes it possible to discuss and study possible initiatives even in informal contexts and in any useful situation of exchange between individual members.</p>
--	---	---	---	---

<p>Best practices for the community-led innovation spaces</p>	<p>The motivation to create best practices for community-led innovation spaces in the Abruzzo area stems from a desire to foster local creativity, collaboration, and sustainable development. Community-based cooperatives represent this kind of social innovation. These enterprises aim to empower community members to address local challenges and opportunities through innovative solutions, stimulate economic growth, enhance social cohesion, and preserve the region's natural and cultural heritage.</p>	<p>To address best practices, it results important to document successful initiatives in a comprehensive way, including challenges and outcomes, then establishing accessible knowledge-sharing mechanisms. Through tailored training programs and peer learning networks, stakeholders can disseminate these practices effectively, listening carefully the community. Developing replication toolkits facilitates easy implementation, while pilot projects test the viability of initiatives in diverse rural contexts, with rigorous monitoring and evaluation guiding adjustments.</p>	<p>Best practices serve as useful drivers for successful future actions based on innovative social initiatives such as MAPs. Establishing comprehensive knowledge about best practices may be the most powerful way to replicate these actions.</p>	<p>The Network of "Borghi IN" and therefore the MAP now plays a leading role in the discussion of territorial priorities and in the choice of thematic areas of action which are then the discussion areas of the Rural Labs. The themes identified (mobility, proximity services and small mountain agricultural productions) are based on direct experiences of the participants and it is the participants themselves who define training needs, discussion and analysis of needs and possible solutions.</p>
<p>Regional MAP sustainability</p>	<p>In order to be consistent with the values that drive the Abruzzo MAP, it is necessary to address the ecological impact resulting from the management and organizational activities that will support this project.</p>	<p>the MAP can collaboratively develop and implement a framework of impact evaluation able to evaluate both the environmental sustainability but also the economic and social sustainability</p>	<p>In order to replicate sustainable actions in further MAPs, stakeholders should first document successful practices and establish a knowledge-sharing system accessible to all. They should then develop training programs tailored to different rural contexts, foster peer learning networks, and</p>	<p>The sustainability of the initiatives, both in terms of time and replicability, will depend greatly on the success of the initiatives identified: the premise, namely the analysis of needs, is very positive and participation and sharing allow us to lay the</p>

			<p>create replication toolkits for easy implementation. Pilot projects can test these actions in diverse locations, with robust monitoring and evaluation mechanisms in place to track progress and inform adjustments. Collaboration across sectors is essential to maximize resources and scale up the impact of sustainable actions across rural areas.</p>	<p>foundations for this success to be real.</p>
--	--	--	--	---

The identified exploitation activities, motivation, exploitation routes and potential for replication for MAP Abruzzo will remain the same in the next period.

7.3.3 MAP Trentino

MAP: TRENINO (WITH CONDUCTED ACTIVITIES BY M18)				
Key area of interests	Motivation/ Governance	Exploitation routes	Potential for replication	Conducted activities by the M18
Research knowledge generated in rural areas	Through the studies conducted by the project's research partners, it is possible to	Move from a system of recognising complex needs to one of recognising rights, which vulnerable groups	Extend the logic of the personal project (or individual assistance and support plan) to other categories of	Several meetings and interviews with local stakeholders enabled the collection of data and knowledge about the rural

	<p>retrieve fundamental information on the causes of socio-economic exclusion of some of the vulnerable groups, such as persons with disabilities. By mapping the initiatives carried out on the territory by public institutions and other welfare service providers, it is possible to trace the informational, organisational and symbolic short-circuits that prevent full inclusion in the socio-economic life of the community.</p>	<p>(such as persons with disabilities) fully and incompressible hold. The supports deemed necessary to respect these rights must be the result of a process of listening to and involving the beneficiaries (and their caregivers), co-designing the customised plan, sharing monitoring and guaranteeing reasonable accommodation, the outcome of participatory planning and actions aimed at removing barriers and discrimination.</p>	<p>vulnerable people at risk of exclusion, moving from a logic of protection welfare to one of promotion welfare, in which space is given to models of empowerment and peer counselling.</p>	<p>context, supporting needs analysis and opportunity identification in the project's target areas.</p>
<p>Framework for the upscale of social economy in rural areas</p>	<p>The social economy in Trentino is characterised by strong territorial roots and a cooperative tradition that has deep roots in the history of the Province. This form of economy is developed</p>	<p>Recompose territorial resources with community welfare initiatives, enhancing the local presence guaranteed by the capillary presence of cooperation and other third sector organisations. Some</p>	<p>The capillary network of Sieg and the growing number of Coworking spaces, as well as the interest encountered around the figure of the link worker indicate the possibility of replicating a proximity welfare model,</p>	<p>Activities such as the meeting with SIEG, the meeting with Consolida, and the co-design work on the DES Valsugana contributed to the development of a reference framework for enhancing and scaling Social Economy in the region.</p>

	<p>through different types of organisations, including cooperatives, social enterprises, voluntary associations and other third sector entities, operating in various economic and social sectors (such as agriculture, credit, personal services and distribution) with the aim of meeting the needs of the local community and promoting sustainable development.</p>	<p>particularly significant actors have been identified to implement community empowerment initiatives, such as qualified distribution outlets like Sieg, Coworking spaces and the activation of new professional figures dedicated to peer counselling, such as link workers.</p>	<p>informal light, scalable through the replication of a model of assessment and research and activation of local resources capable of responding more effectively to the needs of people at greater risk of exclusion.</p>	
<p>MAP governance and operation mechanisms</p>	<p>Governance at provincial and local level will take place in a shared manner, aiming to develop innovative, accessible, streamlined and flexible ways of working, close to the needs of beneficiaries and able to make best use of the skills of Link Workers and the</p>	<p>Establishment and maintenance of four permanent working groups, set up to oversee the main functions, and composed as follows: interinstitutional planning table (health, social, labour, education, credit, insurance, third sector, etc.), advisory group, operational and partnership coordination team (link</p>	<p>The governance experimented in the MAPs, as well as the methodological approach of social prescribing, can serve as a forerunner and turn into good practice that can be replicated at a national level also for other categories of beneficiaries, particularly in the context of the activities of relations with the territory,</p>	<p>Various planning meetings and MAP launch events defined the governance structures and operational modalities of the MAPs, including the involvement of institutional and third-sector actors.</p>

	potential of the Social Prescribing methodology explored in other community welfare projects.	workers and other territorial operators).	health promotion, proximity care and social inclusion that can be developed in the context of the Community Homes.	
Best practices for the community-led innovation spaces	Today, there are many good practices at international and national level that can serve as a reference and example for responding to local territorial needs. There is an overproduction of good practices and these are not always analysed in order to be transferred and scaled up. In the course of the ESIRA project, large databases of good practices will therefore be constantly monitored, e.g. the Interreg Europe Policy Learning Platform and the European Social Fund Plus Social Innovation Match. Since the beginning of the	It is possible to imagine coworking spaces as places of innovation with a community traction, in which to co-construct sustainable responses to the needs of citizens at risk of marginalisation, in collaboration with public institutions and in close synergy with other local authorities and realities. Thanks to the involvement of link workers, it will be possible to guarantee listening and orientation towards an aggregate offer of services and opportunities, accessible thanks to a qualified network of associations, cooperatives and social	The development of the WeMi network, which started with 6 spaces and has seen the network spread over the last 5 years to the 17 points that are active today, suggests a large margin of success in replicating the model.	During several sessions, best practices for community-led innovation were shared and discussed as part of training and capacity-building efforts within the MAP.

	<p>project, one of the good practices that has been taken as a reference concerns the WeMi Spaces made available by the Municipality of Milan. These are meeting and orientation places where, thanks to specialised operators, the most suitable welfare solutions can be found to meet the needs of citizens and their families, activate forms of shared welfare, use the services made available by the network and develop voluntary actions.</p>	<p>enterprises active in the area.</p>		
<p>Regional MAP sustainability</p>	<p>The regional co-operative system and the Federazione Trentina della Coeprazione can identify, aggregate and activate human and organisational resources related to formal and</p>	<p>The Federation, together with Euricse, will be able to guide those involved in MAPs by signalling and facilitating access to support and funding instruments made available</p>	<p>This model, tested through the involvement of the first two MAPs, is replicable in other provincial territories where factors of exclusion of vulnerable groups are present.</p>	<p>Specific activities included initiative evaluations, sustainable project design, and the definition of indicators to ensure long-term MAP durability. Activities supporting the sustainability of MAP are: the formalisation of the public-private partnership (FTC-PAT) for the implementation of</p>

	informal resources in the provincial territory, contributing to the socio-economic sustainability of MAPs.	through European or local calls for funding.		Social Prescribing models in favour of various groups of people and to meet different needs; the submission of the “Young: WE-SPACE” proposal to the Fondazione Caritro for the co-financing of the initiative. FTC’s participation in INVEST4HEALTH COMPETENCE BUILDING PROGRAMME on smart capacitating investment provides expertise in financing innovative prevention and long-term outcomes actions. The programme allows FTC (and subsequently MAP stakeholders and members with whom the training experience will be shared) to experiment with innovative funding models. The programme offers a structured, practical path to develop and refine MAP ideas, supported by real-world examples and expert facilitation.
--	--	--	--	--

The identified exploitation activities, motivation, exploitation routes and potential for replication for MAP Trentino will remain the same in the next period.

7.3.4 MAP Northern Hungary and Northern Great Plain

During the initial phase of preparing the Exploitation Plan, the MAPs in Northern Hungary and the Northern Great Plain had not yet developed a clear strategy for exploitation. Since then, they have identified key motivations, potential exploitation pathways, and opportunities for replication.

MAP: NORTHERN HUNGARY AND NORTHERN GREAT PLAIN (WITH CONDUCTED ACTIVITIES BY M18)

Key area of interests	Motivation/ Governance	Exploitation routes	Potential for replication
Research knowledge generated in rural areas	Collected knowledge will enable practical fieldwork, providing direct support and resources for enhancing local communities. In this way, it will be possible to offer tangible assistance to marginalized groups in the region.	The studies serve as a scientific instrument for the acquisition of specific knowledge about vulnerable groups in various innovation ecosystems. By investigating the challenges confronted by rural communities, these studies provide invaluable insights and data that can inform the implementation of targeted interventions and policies. The results can be incorporated into the objectives of local spatial development documents. For example, in the county strategy to combat child poverty, the social	By grasping the distinctive dynamics at play in rural settings, stakeholders can devise and disseminate more efficacious strategies to advance inclusion and empower vulnerable groups. By capitalizing on the findings from these studies, initiatives can be customized to address the specific needs of rural populations, fostering greater participation and engagement in innovation ecosystems and social activities. This comprehensive approach not only enhances the well-being and opportunities for individuals in rural areas but also contributes

		services planning concept, the integrated settlement development strategy, the local equal opportunities plan or the county catch-up pact, the employment pact plans.	to more inclusive and resilient communities overall.
Best practices for the community-led innovation spaces	Recognizing community-led innovation spaces can provide a new perspective about national and regional institutions and policy makers.	Best practices can be shared via conferences and other scientific gatherings where targeted stakeholders are present.	

7.3.5 MAP Zachodniopomorskie

MAP: ZACHODNIOPOMORSKIE (WITH CONDUCTED ACTIVITIES BY M18)

Key area of interest	Motivation/ Governance	Exploitation routes	Potential for replication	Conducted activities by the M18
Research knowledge generated in rural areas	The collected knowledge will enable the adaptation of current policies to the needs of a given community. It will deepen the understanding of the susceptibility of specific social groups to social exclusion and help	Research on social exclusion in the region will be used to shape regional policy in support of socially excluded people, establishing effective actions, programs and training that meet their needs. The data generated as	The conducted research will allow for the verification and validation of research results, building confidence in their reliability and generalizability. The evidence we provide will support scientific progress	A regional report has been prepared for the MAP area, providing a comprehensive overview of the socio-economic situation in the region and its points of

	<p>identify potential solutions. Rational for this project is the need to have up-to-date knowledge based on experiences resulting from the current needs of people at risk of social exclusion. The involvement of communities affected by social exclusion in the process of creating new solutions will enrich the contribution of knowledge to the development of real solutions that respond to the real needs of users, while ensuring social acceptance and equality of distribution.</p>	<p>part of the project will be important for local governments because they need better and more detailed information on counteracting social exclusion. New knowledge/innovations that respond to the specific needs of end users/society will enrich existing solutions and provide the basis for further research and work to shape policies or innovations.</p>	<p>and change in current regional and/or national policies, expanding understanding of social exclusion issues. Identifying context-specific user needs will enable solution providers in shaping effective policies to support socially excluded people to differentiate solutions from those already implemented, enabling replication in regions that face similar contexts of use.</p>	<p>contact with the social economy.</p>
<p>Framework for the upscale of social economy in rural areas</p>	<p>The motivation behind the MAP's actions is a comprehensive approach to rural development that focuses on building resilient, integrated and self-sufficient communities that are able to solve problems on their own and use their own potential. The social</p>	<p>MAP activities are based on multidimensional "exploitation routes", aimed not only at identifying needs and developing strategies, but above all at effectively disseminating knowledge, building competences and mobilising local resources to achieve the goals of social</p>	<p>The potential for replication of our model lies in its adaptability, strong research foundation, focus on building partnerships, and addressing universal social and economic challenges of rural areas.</p>	<p>Activities focused on implementing the social inclusion strategy in rural areas, with particular emphasis on the development of the social economy. Key activities included: MAP Kick-off Meeting: Initiation of formal activities</p>

	<p>economy is a key pillar of this vision, offering tools to combine economic goals with a social mission.</p>	<p>inclusion and the development of the social economy. The main exploitation routes include: Regional Research and Local Context Analysis: The basis of our activities is the systematic conduct of in-depth regional and local research, the results of which are regularly presented and discussed with MAP members. This includes both the analysis of secondary data and qualitative research, such as interviews (with authorities, scientists, NGOs, entrepreneurs and citizens). Meetings focused on the issues of the social economy and social entrepreneurship. We include the newly established Youth Council and the Social Economy Science Club, creating platforms for the exchange of knowledge between different generations and</p>		<p>and engagement of key stakeholders. In-depth research and interviews: Conducting interviews with local authorities (Gryfice), scientists (Koszalin University of Technology), NGOs ("Z Pomysłem"), residents and local entrepreneurs to diagnose needs and potential. Needs identification: Defining priorities, such as creating programs for youth, places of development and free time, and counteracting long-term unemployment in rural areas through vocational training and support in job search/starting a business. Building partnerships: Establishing cooperation with the Supervisor of the Social Economy Science Club (involving the club in MAP activities) and talks with the Gryfice Commune</p>
--	--	---	--	--

		<p>environments.</p> <p>Building Strong Partnerships and Networking: We place a strong emphasis on establishing and developing relationships with key partners at the local, regional and academic levels. In addition to ongoing cooperation with local governments (including the Youth Council) and local NGOs (e.g. "Z Pomysłem"), we actively cooperate with academic centers (Koszalin University of Technology, Social Economy Research Group). Through these coordinated routes of exploitation, MAP aims to effectively transform knowledge into practical actions that really contribute to the development of the social economy and the activation of rural residents.</p>	<p>authorities, which resulted in the establishment of the City Youth Council.</p> <p>Raising awareness: Sharing knowledge about social economy and social entrepreneurship, given the low awareness of these concepts.</p>
--	--	---	--

<p>MAP governance and operation mechanisms</p>	<p>MAP management is a process tailored to the needs of participants, based on the principles of dialogue, where a safe and open space for expressing thoughts and opinions plays a key role. Thanks to this approach, it is possible to maintain the group and increase the involvement of participants. The key mechanism is the inclusive nature of MAP, which includes a wide range of stakeholders.</p> <p>Representatives of local government authorities: (President, Vice-President of Gryfice, public and social administration employees) - provide institutional support and access to local resources.</p> <p>Academic environment: (Scientists of the Koszalin University of Technology, Tutor of the Social Economy Science Club) - bring</p>	<p>Sharing experiences of managing MAP with other MAP managers – not only within the ESIRA project, but also outside it.</p> <p>Disseminating good practices in the local community.</p>	<p>There is significant potential for replication. / It would be beneficial to compile best practices related to this issue in the form of a scientific article so that they can be disseminated and used by others.</p>	<p>Activities focus on building an inclusive and effective environment for implementing the Social Inclusion Strategy and developing the social economy in the countryside.</p> <p>Participatory Management: Engaging diverse stakeholders (local government, scientists, NGOs, businesses, citizens, youth) in decision-making and implementation processes, based on MAP meetings.</p> <p>Diagnostics and Planning: Precise identification of local needs and resources through in-depth interviews and analyses (e.g. with Gryfice, Koszalin University of Technology).</p> <p>Building Partnerships and Networks: Actively establishing cooperation with local entities (e.g. Social Economy Science Club, Gryfice Youth Council – established!) for</p>
--	---	--	--	--

	<p>research, analytical knowledge and an innovative approach.</p> <p>Non-governmental organizations: (President of the NGO "Z Pomysl") - represent the social perspective and grassroots initiatives.</p> <p>Representatives of local private business: (Owners) - bring market experience and the potential to create jobs.</p> <p>Citizens: (including members of the newly established City Youth Council) - provide the perspective of beneficiaries and co-creators of change, strengthening the building of civil society. Each stakeholder plays an active role in identifying problems, formulating solutions and implementing pilot projects.</p>			<p>knowledge exchange and replication.</p>
--	--	--	--	--

<p>Best practices for the community-led innovation spaces</p>	<p>Best practices for community-led innovation spaces focus on engaging local residents and stakeholders as the main creators of solutions, not just their beneficiaries. Key elements include: Deep participation and inclusiveness: Ensuring that all voices, especially marginalized ones, are heard and valued. Identifying local challenges: Focusing on real, priority community problems, diagnosed from the bottom up, which allows for the creation of relevant and needed solutions. Transfer of knowledge and good practices: Actively sharing experiences and models of action (both within and outside the network) to inspire and enable the replication of successful solutions in other locations. Active cross-sector partnerships:</p>	<p>Share good practices. Further Research and Knowledge Transfer</p>	<p>There is significant potential for replication. / It would be beneficial to compile best practices related to this issue in the form of a scientific article so that they can be disseminated and used by others.</p>	<p>MAP activities are aimed at creating and promoting an environment conducive to community-led innovation by implementing a range of best practices, including broad participation and inclusiveness, identifying local challenges and needs, building trust and relationships, engaging the academic community, and collaborating with NGOs.</p>
---	--	--	--	--

	<p>Engaging local government, science, NGOs and business in innovation processes, which strengthens local potential and increases the chances of success.</p>			
<p>Regional MAP sustainability</p>	<p>Ensuring a good selection of participants and maintaining their engagement. The willingness to maintain an engaged group of MAP members even after the project has ended.</p>	<p>From the very beginning, ensure deep involvement of a wide range of partners: local governments, NGOs, local businesses, academic communities, but above all residents themselves, including target groups (youth, seniors, unemployed people). The more entities feel like "owners" of MAP, the greater the chance of its continuation. Where possible and justified, formalize cooperation (e.g. through agreements, declarations, statutes). The example of establishing the Gryfice Youth Council is ideal - it is a permanent structure that can operate independently of the project. Actively strive to</p>	<p>MAP activities have a strong potential for replication in other rural areas in Poland and abroad, facing similar challenges of social inclusion and economic development. Key elements enabling adaptation include: Modular and Adaptable Approach: A universal diagnostic methodology based on interviews with diverse stakeholders allows for effective identification of local needs and resources in any context. Scalable Partnerships and Networks: Active engagement of local government, academia (e.g. Science Club, Gryfice Youth Council) and NGOs and</p>	<p>Activities carried out in this area include: Institutionalization and Embedding in Local Structures: Integration with the policies of the Gryfice commune (e.g. including MAP objectives in development strategies), an example of which is the establishment of the City Youth Council. Cooperation with local institutions (local government, NGOs) to continue the solutions developed. Building Sustainable Human and Social Capital: Maintaining long-term engagement of various stakeholders (local government, scientists, business, NGOs, residents).</p>

		<p>include MAP goals and activities in local development strategies of the commune, social programs or other planning documents. This ensures that MAP is included in the public policy system. Clearly communicate the added value that MAP brings to the commune and region (e.g. decrease in unemployment, activation of youth, development of local services). Actively share MAP experiences and models of operation (including with other MAPs), creating a network of learning and inspiration. Good practices can be adapted and scaled.</p>	<p>businesses creates a model for building strong, multi-stakeholder partnerships. Emphasis on institutionalization of cooperation increases the chances for sustainable continuation of activities after the project. Addressing Universal Challenges: Experiences in youth activation and creating platforms for their development are easily adaptable to the needs of other municipalities. Established Knowledge Transfer: Actively sharing MAP management experiences (within and outside ESIRA) and with local sister initiatives is a deliberate strategy to replicate and scale good practice.</p>	<p>Long-term academic cooperation with the Social Economy Research Group of the Koszalin University of Technology strengthens the regional support environment. Active Knowledge Transfer and Promotion: Sharing experiences in MAP management with other entities (within and outside the ESIRA project) to promote proven practices.</p>
--	--	--	---	--

The identified exploitation activities, motivation, exploitation routes and potential for replication for MAP Zachodniopomorskie will remain the same in the next period.

7.3.6 MAP Leski-Bieszczadzki

MAP: LESKI-BIESZCZADZKI (WITH CONDUCTED ACTIVITIES BY M18)				
Key area of interest	Motivation/ Governance	Exploitation routes	Potential for replication	Conducted activities by the M18
Research knowledge generated in rural areas	Collected knowledge will enable practical fieldwork, providing direct support and resources for enhancing local communities. In this way, it will be possible to offer tangible assistance to marginalized groups in MAP Leski-Bieszczadzki, improving their social position and economic opportunities.	The Regional studies on social exclusion and risk of poverty in MAP Leski-Bieszczadzki serve as a scientific tool for gaining specific knowledge about vulnerable groups in various innovation ecosystems. By exploring the specific challenges faced by rural communities, these studies provide valuable insights and data that can inform targeted interventions and policies.	There is a potential for replication. / Through understanding the unique dynamics at play in rural settings, stakeholders can develop and replicate more effective strategies to promote inclusion and empower vulnerable groups. By leveraging the findings from these studies, initiatives can be tailored to address the specific needs of rural populations, fostering greater participation and engagement in innovation ecosystems and social	A regional report has been prepared for the MAP area, providing a comprehensive overview of the socio-economic situation in the region and its points of contact with the social economy.

			activities. This holistic approach not only enhances the well-being and opportunities for individuals in rural areas but also contributes to more inclusive and resilient communities overall.	
Framework for the upscale of social economy in rural areas	Social economy issues are not widely known. Thanks to the ESIRA project, we have an opportunity to share knowledge on this topic and identify possible ways of using this approach to reduce social exclusion of people from the MAP area.	One way is through regional studies, the results of which are presented to MAP members. Another way is through knowledge-raising meetings, including training on social economy issues, and also strong cooperation with the Podkarpackie Social Economy Support Center.	There is a potential for replication. / To enable replication, results should be made publicly available, e.g. through articles or social media posts. Training and coaching are also needed in order to implement the train-the-trainers program.	Cooperation has begun with Podkarpackie Social Economy Support Center. MAP members identified topics that should be covered in training sessions. MAP members identified social economy initiatives that they would like to develop as part of the ESIRA project.
MAP governance and operation mechanisms	MAP management is a process tailored to the needs of participants, based on the principles of dialogue, where a safe and open space for expressing thoughts and opinions plays a key role. Thanks to this approach,	Sharing experiences of managing MAP with other MAP managers – not only within the ESIRA project, but also outside it. Disseminating good practices in the local community.	There is significant potential for replication. / It would be beneficial to compile best practices related to this issue in the form of a scientific article so that they can be disseminated and used by others.	MAP's activities are based on a set approach: open, non-judgmental, dialogic and run in a safe space. MAP members form a diverse group based on the project guidelines—we are constantly trying to further balance the proportions—increase the

	it is possible to maintain the group and increase the participants' commitment.			participation of younger and older people, and try to include a person with a disability in our activities.
Best practices for the community-led innovation spaces	Innovations should come from the bottom up, from residents. That is why we want to support these initiatives and share good practices.	Share good practices	There is significant potential for replication. / It would be beneficial to compile best practices related to this issue in the form of a scientific article so that they can be disseminated and used by others.	Launch of Rural Labs, which focus on social economy initiatives created by MAP members
Regional MAP sustainability	Ensuring a good selection of participants and maintaining their engagement. The willingness to maintain an engaged group of MAP members even after the project has ended.	When selecting people for MAP, follow the advice of local leaders who know the community and residents better.	There is a potential for replication.	Establishment of MAP based on principles consistent with our vision of MAP. Bonding activities, group cohesion.

The identified exploitation activities, motivation, exploitation routes and potential for replication for MAP Leski-Bieszczadzki will remain the same in the next period.

7.3.7 MAP Jablanica and Pčinja

MAP: JABLANICA AND PCINJA (WITH CONDUCTED ACTIVITIES BY M18)				
Key area of interests	Motivation/ Governance	Exploitation routes	Potential for replication	Conducted activities by the M18
Research knowledge generated in rural areas	Collected knowledge will enable practical fieldwork, providing direct support and resources for enhancing local communities. In this way, it will be possible to offer tangible assistance to marginalized groups in Jablanica and Pcinja, improving their social position and economic opportunities.	The Regional studies on social exclusion and risk of poverty in Jablanica and Pcinja serve as a scientific tool for gaining specific knowledge about vulnerable groups in various innovation ecosystems. By exploring the specific challenges faced by rural communities, these studies provide valuable insights and data that can inform targeted interventions and policies.	Through understanding the unique dynamics at play in rural settings, stakeholders can develop and replicate more effective strategies to promote inclusion and empower vulnerable groups. By leveraging the findings from these studies, initiatives can be tailored to address the specific needs of rural populations, fostering greater participation and engagement in innovation ecosystems and social activities. This holistic approach not only enhances the well-being and opportunities for individuals in rural areas but also contributes to more inclusive	By month 18 of the project, a regional study titled “Regional Report on Social Exclusion and Social Economy Initiatives in Rural Areas – Jablanica and Pčinja Districts, Serbia” was completed. This study focused on social exclusion and poverty risk in these districts, providing a detailed analysis of social and economic challenges and identifying marginalized groups. Two MAP meetings were held by the M18, engaging local stakeholders in discussions about the findings and their implications for regional development. The results were disseminated among local authorities, civil

			and resilient communities overall.	society, and development actors, laying a solid foundation for future targeted interventions and support programs.
Framework for the upscale of social economy in rural areas	Strengthening the social economy is seen as a way to address rural depopulation and low economic activity by empowering local actors and cooperatives.	Key opportunities to promote the social economy include supporting cooperatives focused on prequalification of young women and youth, regenerative agriculture, and improving seasonal work conditions. Targeted education and training programs, along with cross-sector partnerships, will further boost economic growth.	This model can be replicated in similar rural regions by adapting cooperative initiatives and training programs to local needs. The focus on empowering youth and sustainable agriculture provides a scalable framework for other communities aiming to strengthen their social economy.	By M18, IRI held 3 Rural Labs focused on regenerative agriculture, women's requalification, and optimization of seasonal workers. Additionally, we conducted a project writing training to support the development of such social economy initiatives.
MAP governance and operation mechanisms	A well-functioning MAP aimed at tackling social challenges should be grounded in democratic practices that enable the community to actively shape new opportunities	Establishing a multi-actor platform with regular meetings, democratic principles, and shared responsibilities in decision-making and initiatives development.	The MAP model can be easily replicated in other rural Serbian regions.	MAP established and activated through inclusive outreach; regular meetings held; planning of pilot initiatives launched with local stakeholders.

	through innovative approaches.			
Best practices for the community-led innovation spaces	Promoting a culture of collaboration and innovation is key to unlocking youth potential and building resilient local innovation ecosystems.	Gathering and sharing best practices with MAP members and other stakeholders.	The MAP model can be easily replicated in other rural Serbian regions.	Regular meetings within the MAP and Rural Labs were held in a manner similar to a community-led innovation space, where members actively shared best practices. This approach facilitated mutual understanding and agreement on initiatives and next steps.
Regional MAP sustainability	Ensuring continuity of MAP activities beyond the project timeline is essential for systemic change in rural development and youth inclusion.	Designing mechanisms for local ownership, co-financing options, partnerships with institutions, and long-term resource mobilization strategies.	Sustainability strategies can be adapted by other MAPs if built on early engagement, trust, and institutional embedding from the start.	By M18, one SSE enterprise was established with the goal of ensuring the sustainability of the MAP and the initiatives arising from it, even after the project's completion.

The identified exploitation activities, motivation, exploitation routes and potential for replication for MAP Jablanica and Pčinja will remain the same in the next period.

7.3.8 MAP Druskininkai

MAP: DRUSKININKAI (WITH CONDUCTED ACTIVITIES BY M18)				
Key area of interests	Motivation/ Governance	Exploitation routes	Potential for replication	Conducted activities by the M18
Research knowledge generated in rural areas	Improving social inclusion and economic participation of NEETs and elder people through collaborative governance involving local authorities, NGOs, and educational institutions.	Developing and implementing vocational training programs, digital literacy initiatives, career counselling, and intergenerational activities.	Replication in other regions with similar social exclusion issues by adapting programs to local contexts and leveraging local partnerships.	<p>MAP meetings have been facilitated with an inclusive approach and targeted recruitment, leading to the development of six pilot initiatives focused on low-income groups, the elderly, and youth.</p> <p>The pilots draw on ESIRA's initial research, local MAP knowledge, and input from target group members. Collaboration has also been established with LAG- and municipality-led initiatives, with additional meetings supporting implementation beyond MAP activities.</p>

<p>Framework for the upscale of social economy in rural areas</p>	<p>Since the concepts of social economy and social enterprise remain relatively unfamiliar in Lithuania, we recognized the need to carefully explore how these ideas could be understood and effectively presented within the Lithuanian context.</p>	<p>The regional report introduces the concepts of social economy and social enterprise, along with their practical applications in Lithuanian context. It holds potential as a valuable tool for raising awareness and fostering understanding – helping people recognize how these models can function effectively and contribute positively to society.</p>	<p>A new literature review could be undertaken at a later stage, building upon the sources already examined and their existing citation records.</p>	<p>During this phase, a review of Lithuanian literature on the social economy was conducted as part of the preparatory work for the regional report focused on the Lithuanian context.</p>
<p>MAP governance and operation mechanisms</p>	<p>We carried out the recruitment of MAP members in alignment with the project's guidelines, ensuring the group was built with the intended diversity and representation.</p>	<p>We employed a combination of direct outreach via LAG contacts and broader information dissemination across the region.</p>	<p>This strategy is easily replicable and could be effectively applied in other contexts.</p>	<p>Individual and group meetings were held to recruit MAP members. The group met three times and began shaping six potential pilot initiatives. Communication and dissemination activities supported recruitment, strengthened the local community of practice, and laid the groundwork for future rural labs to support pilot implementation.</p>

<p>Best practices for the community-led innovation spaces</p>	<p>We engaged through both formal and informal settings, targeting individuals as well as groups.</p>	<p>We employed a combination of direct outreach via LAG contacts and broader information dissemination across the region.</p>	<p>This strategy is easily replicable and could be effectively applied in other contexts.</p>	<p>Established communication techniques and dialogue-based working methods were applied to foster an open, trusting, and productive environment.</p>
<p>Regional MAP sustainability</p>	<p>Secure sufficient participation via personal communication to launch the MAP and conduct a successful Kick-Off meeting.</p>	<p>We combined direct outreach with broader dissemination through larger audience: LAG, Municipality, local entrepreneurs and communities. Additionally, we held individual and public meetings with interested participants to introduce them to the project and onboard them into the MAP group.</p>	<p>This strategy is easily replicable and could be effectively applied in other contexts.</p>	<p>Established communication techniques and dialogue-based working methods were applied to foster an open, trusting, and productive environment. This approach encouraged a sense of commitment, contributing to the long-term sustainability of the MAP.</p>

The identified exploitation activities, motivation, exploitation routes and potential for replication for MAP Druskininkai will remain the same in the next period.

7.3.9 MAP Innlandet

MAP: INNLANDET (WITH CONDUCTED ACTIVITIES BY M18)				
Key area of interests	Motivation/ Governance	Exploitation routes	Potential for replication	Conducted activities by the M18
Research knowledge generated in rural areas	Study of social exclusion in the Kongsvinger region will more closely identify drivers for exclusion and barriers for inclusion. Further it will generate knowledge about how people in vulnerable situations themselves understand, deal and make sense of their own position in terms of inclusion/exclusion in their everyday life.	Knowledge generated about social exclusion, particularly of people with disabilities, for the Kongsvinger region and for Norway more generally will aid the MAP group in its development of pilot projects. It will enable them to better target pilots, be well oriented as to potential financial and other support policies or services. The knowledge of how people deal with and how they understand their own social position is crucial to the success of MAP developed pilots.	The potential for replication of this project is based on a logic of small victories that when repeated leads to greater results. Both the MAP-group as a concept and the individual pilots generated should be potential elements for replication. Combined with the focus on developing projects embedded in local context creates a significant potential for replication, in an iterative process of policy transfer.	The regional study of the Kongsvinger region has informed project activities, particularly within the MAP group and during the development of pilot initiatives. A paper was also submitted for review, highlighting the novelty of the social economy and enterprise concept in Kongsvinger and Norway, with a focus on the integration of social enterprises within a comprehensive welfare system.
Framework for the upscale of social	As the social economy and social enterprise as concepts are not well	The regional report presents social economy and enterprise and their	A new review of literature could be done at a later stage, starting with the	During this initial period, a review of Norwegian literature on the social economy was

economy in rural areas	known in Norway, outside of a few cooperations within agriculture and housing. We needed to work on how to understand and present these concepts in the Norwegian context	uses. Potentially the report could be used to spread this information, making people more aware of these concepts and the can operate and be positive	literature already reviewed and their citation record.	carried out as part of the work for the regional report from Kongsvinger, Norway.
MAP governance and operation mechanisms	Recruitment of members for the MAP. We needed to build the group according to project guidelines	We used a mix of direct contacts and also spreading information in larger fora.	This strategy could easily be replicated	Individual and group meetings were held to recruit MAP members. The group met seven times and began developing two pilot initiatives. Communication and dissemination activities supported ongoing recruitment, community-building, and preparation for rural labs that will support the pilots.
Best practices for the community-led innovation spaces	Using formal and informal settings, targeting both individuals and groups.	We used a mix of direct contacts and also spreading information in larger fora.	This strategy could easily be replicated	Established communication techniques and dialogue-based working methods were used to create an open, trusting, and productive environment.

Regional MAP sustainability	Recruit enough participants to start the MAP and hold a successful Kick Off meeting	We used a mix of direct contacts and also spreading information in larger fora. We also conducted open public and individual meetings with interested people to on-board them in the project and MAP group.	This strategy could easily be replicated	Established communication techniques and dialogue-based working methods were used to create an open, trusting, and productive environment. This fostered commitment, enhancing the sustainability of the MAP.
-----------------------------	---	---	--	---

The identified exploitation activities, motivation, exploitation routes and potential for replication for MAP Innlandet will remain the same in the next period.

8. Management of intellectual property rights

Each beneficiary is obligated to safeguard its results and ensure their adequate protection for an appropriate duration and territorial scope. This obligation arises when the results are reasonably expected to be commercially or industrially exploited or in any other reasonable and justifiable circumstance. When determining the protection measures, the beneficiary must consider its own legitimate interests as well as the legitimate interests, especially commercial, of other beneficiaries.

The effective exploitation of exploitable results relies, among other factors, on the proper management of intellectual property, which should be integrated into the overall knowledge management of the project.

Throughout the ESIRA project, specific actions have been and will continue to be taken to address issues related to intellectual property rights. These actions include assessing the pre-existing knowledge (Background) of project partners, evaluating the results generated during the project, proposing optimal strategies for protecting intellectual property rights, and ensuring ownership and proper implementation of measures for IPR protection.

The framework for managing intellectual property rights is outlined in the Consortium Agreement, which defines rules pertaining to the following IP issues:

- Identification of Background and specific limitations and conditions for its utilization.
- Ownership of the results.
- Transfer of the results.
- Access rights to Background and results.
- Non-disclosure of information.

KER area	IP Strategy
Research knowledge generated in all WPs	Open Access compatible options, i.e., CCBY. Availability in the project's website (run up to 2 years after the end of the project), and selected OA repositories as ZENODO.
Upscaling project MAPs as community-led innovation spaces	Open Access compatible options, i.e., CCBY. Availability in the project's website (run up to 2 years after the end of the project), and selected OA repositories as ZENODO.
Replicating ESIRA's community-led innovation spaces for social economy	Open Access compatible options, i.e., CCBY. Availability in the project's website (run up to 2 years after the end of the project), and selected OA repositories as ZENODO.

Participants will evaluate the feasibility of protecting their results once they are generated. Beneficiaries have the autonomy to select any available form of intellectual property protection. Common forms of protection to be considered include patents, trademarks, industrial designs, copyrights, trade secrets, and confidentiality agreements.

The choice of the most suitable form of IP protection, as well as the duration and geographical scope, will depend on the nature of the results (e.g., whether it is an invention, software, or a database), the business plans for their exploitation, and the legitimate interests of consortium partners.

While it is not mandatory for one organization to inform other partners about actions taken to protect intellectual property, it is considered good practice to consult before deciding whether to protect results, especially when dealing with potentially joint intellectual property.

8.1 Examples of the protection of Intellectual Property according to the type of result

Subject matter	Patent	Utility model	New industrial design	Copyright	Trademark	Confidential information
Invention	x	x				
Software	x			x		
Scientific article				x		
Design of a product			x	x	x	
Name of a product-service/project					x	
Know-how						x
Website			x	x	x	

Although the protection of intellectual property is crucial for potential commercial or industrial exploitation, it is not always mandatory.

Protection is not necessary if:

- it is impossible under EU or national law;
- it is not justified in view of the potential commercial or industrial exploitation;
- it is not required by the project's objectives and other relevant factors, such as potential markets and the countries where competitors are located, or whether additional protection of a part of a certain technology would provide significantly broader coverage.

8.2 Considerations when deciding not to protect results

If a participant decides not to protect a result, it is best practice to consider offering to transfer it to other consortium partners or third parties who may be better positioned to exploit and protect the results. If such a transfer is not undertaken, participants receiving European Union funding who do not intend to protect their results but are capable of industrial or commercial application (for reasons other than legal impossibility) must

avoid any dissemination activities without first informing the European Commission. This notification is mandatory for up to four years after the end of the project. The European Commission may decide, with the consent of the participants to whom the result belongs, to assume ownership and take necessary measures to protect it. In this case, the Commission must formally notify the concerned participant within 45 days of receiving the notification.

8.3 Confidentiality agreement

The project partners signed a Confidentiality Agreement (CA) with the European Commission (EC). This CA outlined all the rules to ensure confidentiality, publication procedures that comply with Open Access (OA) and Intellectual Property Rights (IPR) requirements, ownership definitions, and IPR management procedures. These procedures covered access to background and foreground IP, patenting and other IP protection measures, co-ownership agreements, licensing, and more.

An initial analysis of the background IP was conducted prior to the project's commencement. This analysis ensured that the partners' existing knowledge (data, know-how, and any other type of tangible or intangible information) necessary for the project's proper implementation and exploitation was available. The ownership of the foreground IP and project results will be determined towards the project's conclusion, culminating in the release of the Results Ownership List as part of the final summary.

The Results Ownership List will be issued during the final reporting period, reviewed by UBU as the Project Coordinator, and based on feedback from IRI. The project's IP management will not only address identified Key Exploitable Results (KERs) but will also include an IP strategy that allows for setting specific restriction levels for the research outputs, including data, which will be managed under the Data Management Plan (DMP) and is open by default.



9. Partners

